



MS

# Validated Antibodies

Large-Scale Validated Antibodies for  
Immunohistochemistry.

Catalog 2022

---

[www.ms-validatedantibodies.com](http://www.ms-validatedantibodies.com)

**MS Validated Antibodies GmbH**

Bergstedter Chaussee 62a

22395 Hamburg

Tel: +49 (0) 40 89 72 55 81

E-Mail: [info@ms-validatedantibodies.com](mailto:info@ms-validatedantibodies.com)

Website: [ms-validatedantibodies.com](http://ms-validatedantibodies.com)



**SCAN ME**

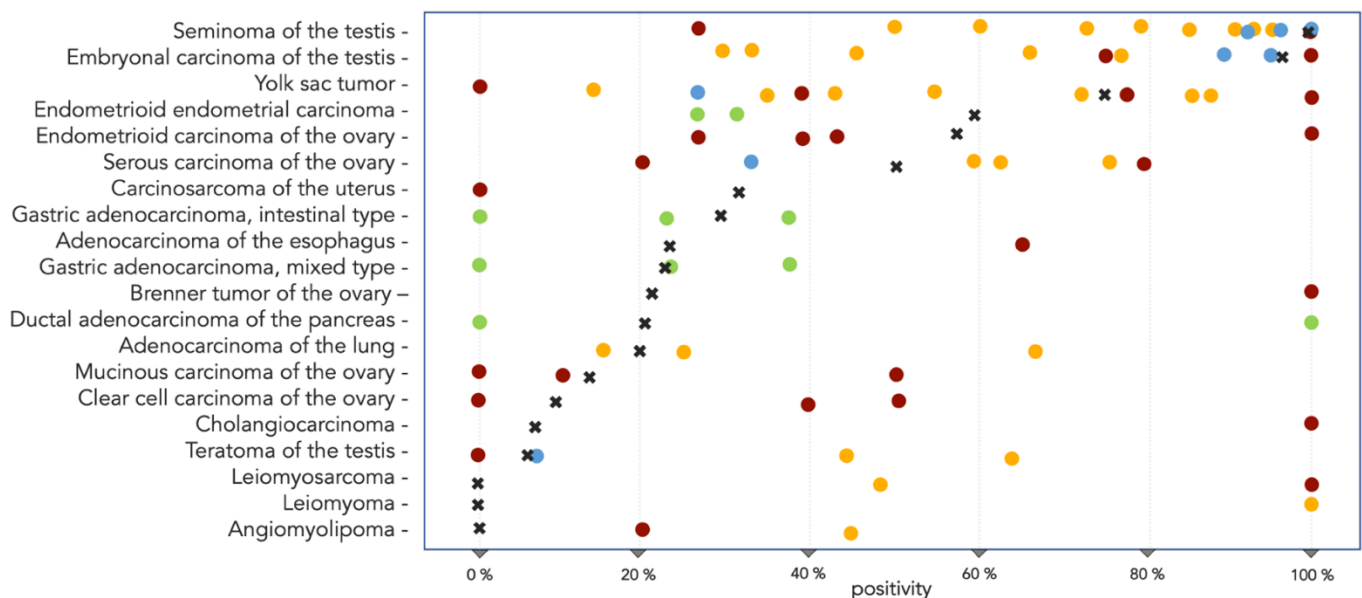
For information on the specific selection and validation of MSVA antibodies,  
see pages 2-12.

Our product overview can be found on pages 14-29, the individual  
antibodies are listed on the following pages.

# „Many IHC publications complicate the work of pathologists and researchers due to non-specific antibodies“

Literature data on immunohistochemical detection of proteins are often confusing. Data on the expression of relevant proteins in individual tumor types often vary between 0 and 100%. A reason for this is the use of insufficiently validated antibodies with non-specific staining behavior.

The PLAP example makes this clear<sup>1</sup>. The colored dots reflect the results of previous studies. In the case of yolk sac tumor, adenocarcinoma of the pancreas, leiomyoma and leiomyosarcoma, the data are between 0 and 100%. But the results are also very divergent for other tumors. The X shows the result of the study by Reiswich et al. with the MSVA antibody MSVA-350R and the protocol we proposed. This performance can be expected with the antibody MSVA-350R.



MSVA has set itself the task of only offering antibodies that have been fully validated on formalin-fixed tissues.

All information on the staining behavior of our antibodies on more than 50 different normal tissues can be found here on our homepage.

<sup>1</sup> Graphic based on Reiswich et al. (2021): "Pattern of placental alkaline phosphatase (PLAP) expression in human tumors: a tissue microarray study on 12,381 tumors." published in *The journal of Pathology* August 7<sup>th</sup>2021

# Why is antibody validation different from antibodies in immunohistochemistry?

Formalin fixation exerts a profound influence on the three-dimensional structure of proteins and the accessibility of epitopes. Because formalin fixation is such a powerful manipulation of proteins, traditional methods for evaluating antibodies on unfixed "perfect" proteins such as Western Blot, ELISA, protein microarrays are of little use, even on very well-selected experimental control materials such as "KO" cell lines ". This way good and bad antibodies cannot be distinguished from one another.

Antibodies intended for use on formalin-fixed tissue must therefore be specifically validated on formalin-fixed tissue. According to the **International Working Group for Antibody Validation (IWGAV)**, there are only two ways to document the specificity of antibodies for immunohistochemistry on this type of tissue. These are:

## 1. orthogonal strategy

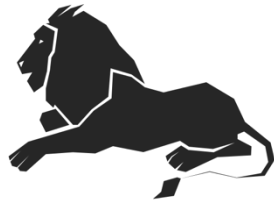
This means the comparison with a second independent method for measuring expression across a large number of different tissue types.

## 2. independent antibody strategy

This means a comparison with one or more independent antibodies for the same target protein. Specific staining is achieved with both antibodies, while staining found with just one antibody must be considered non-specific or cross-reactive.

To ensure the best possible validation and to avoid the problem of non-specific antibodies, MS Validated Antibodies combines both approaches. The resulting abundance of information on the antibodies is available on our website.

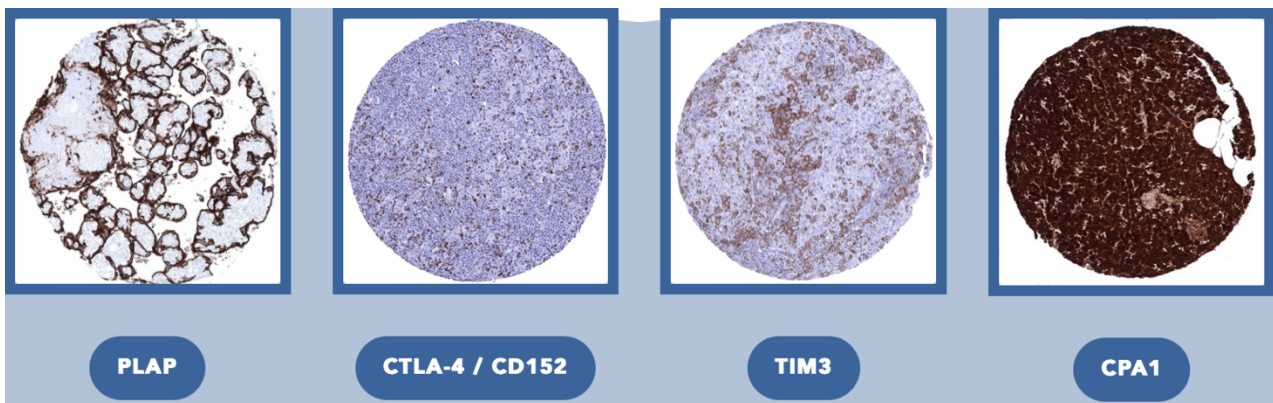




MS

# Validated Antibodies

1. Large-scale tissue-validated antibodies specifically designed for immunohistochemistry on formalin-fixed tissue
2. Unique antibody documentation on the MSVA website with 60-100 images of relevant normal tissues and selected tumors
3. Documented performance characteristics of many antibodies in studies involving more than 10,000 tumors



**MS Validated Antibodies** is dedicated to providing optimal monoclonal antibodies for immunohistochemistry and providing users with unique product documentation that allows them to better understand their antibodies. Key features of the MSVA package include:

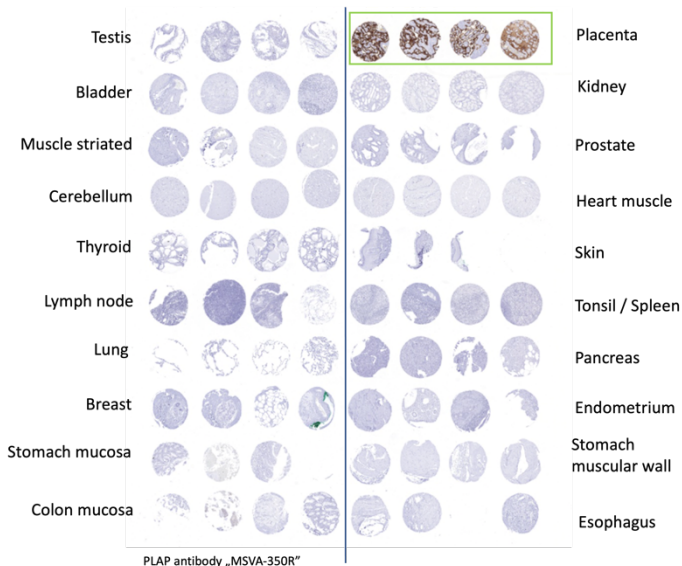
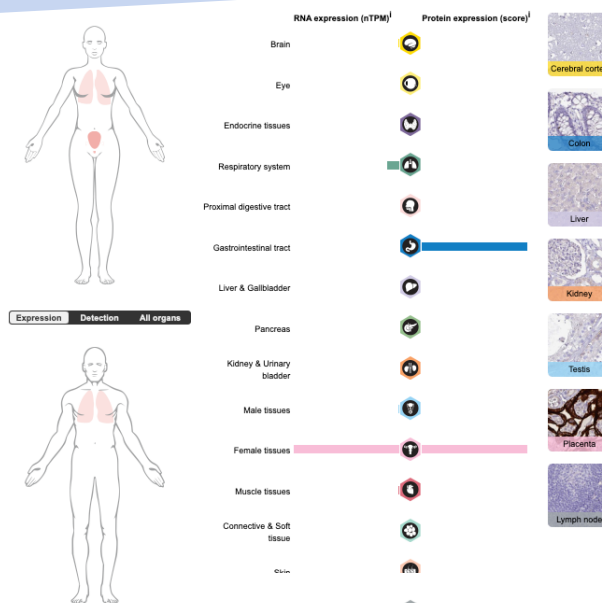
- Strict product selection criteria: **Only 130** of the first 3800 antibodies evaluated were selected for the MSVA portfolio.
- **Protocol suggestions** for manual staining and autostainers (Dako, Leica, Ventana).
- Published **data on the performance characteristics** of our antibodies are compiled on the MSVA website (if available).

# Hands-on Approach

## 1 Look up

RNA data from the Human Protein Atlas (HPA) show in which tissues staining is to be expected.

For example, a PLAP antibody is expected to stain almost exclusively in the female genital tract (placenta).



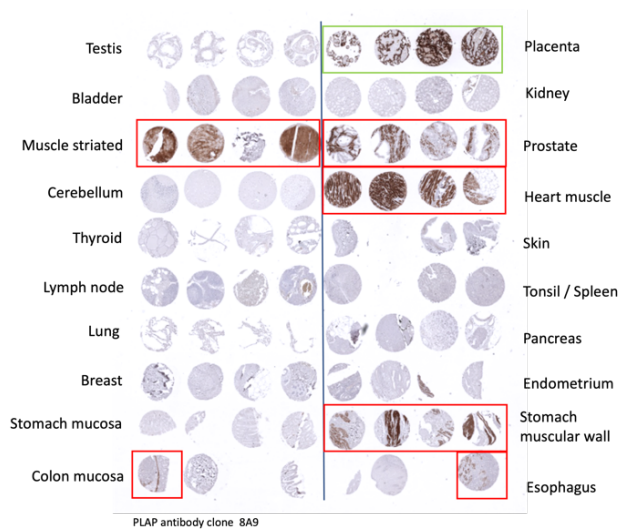
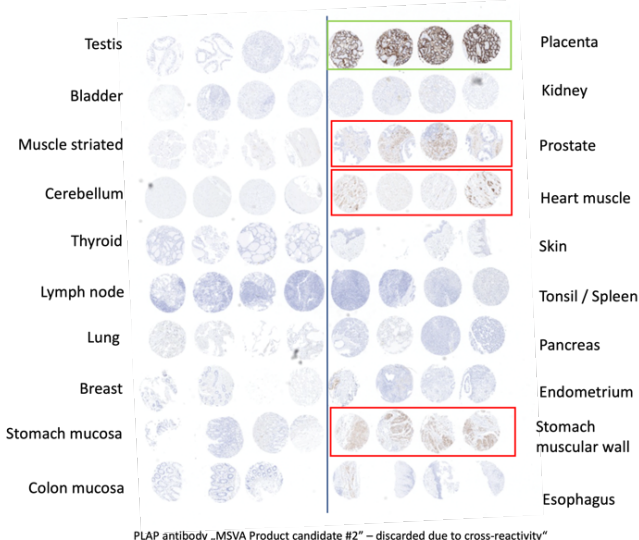
## 2 Stain

Our PLAP clone MSVA-350R only stains placenta on a TMA test.

This result was expected based on the HPA RNA data (orthogonal strategy).

## 3 Compare

The comparison with another MSVA product candidate and another independent and established clone on the market confirms the placenta staining as specific. Additional staining of the two antibodies are both "antibody-specific" and represent cross-reactions.

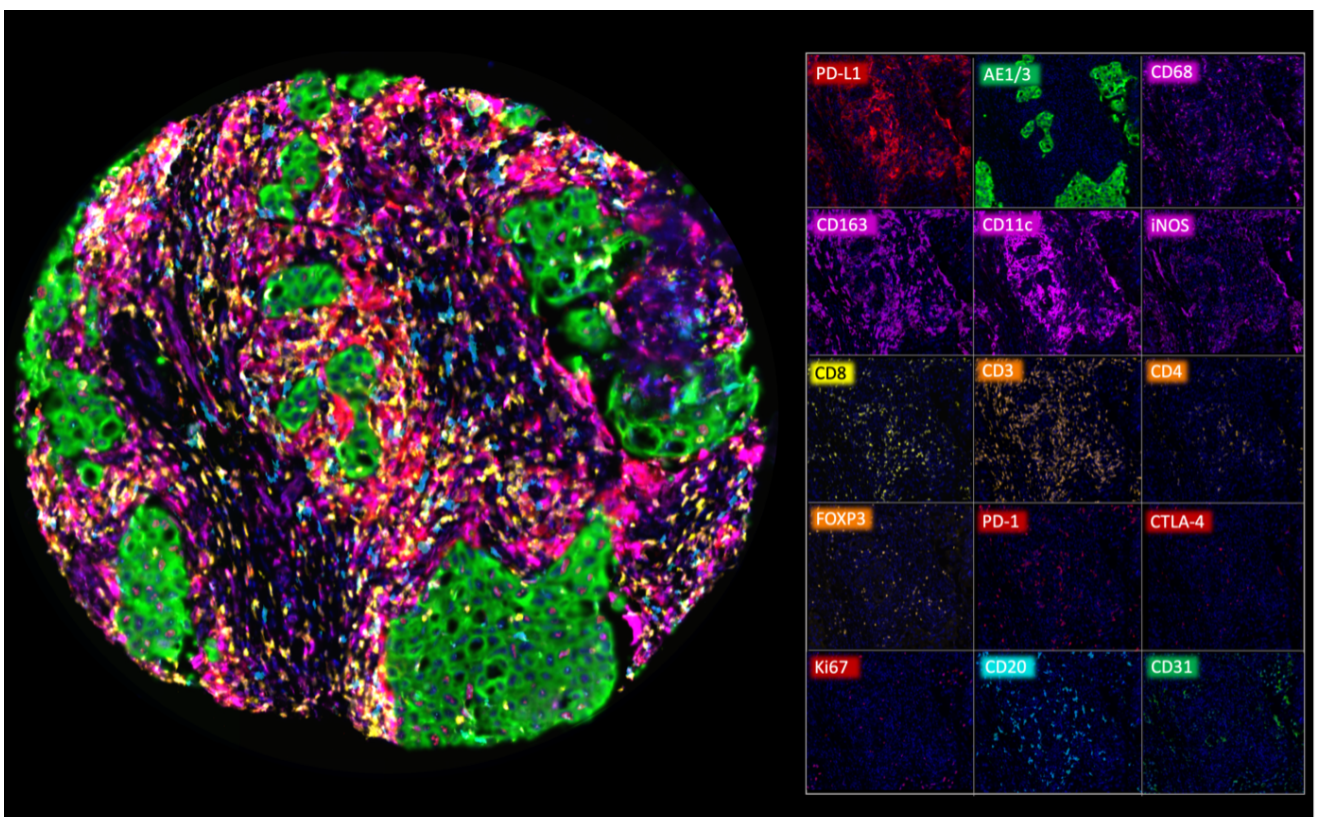


# The future of Immunohistochemistry

**Multiplex fluorescence immunohistochemistry (mflHC)** is the future of immunohistochemistry. It allows multiple antibodies to be applied to a tissue slide. Currently available devices allow the simultaneous analysis of **4** (Versa 8, Leica), **6** (Vectra Polaris, AKOYA) up to **more than 50** antibodies (CODEX, AKOYA). Sophisticated analysis frameworks use artificial intelligence to identify specific cell types defined by a combination of positive and negative antibody staining and the spatial relationship between those cell types.

Due to the high number of different “colors” on each stained slide and the impaired differentiation of morphological cell types in fluorescence imaging, visual quality control of individual antibodies becomes impossible. Non-specific or cross-reactive antibody staining of one or more antibodies used in a multicolor panel can seriously distort the data and conclusions from the experiments.

Hence the quality of the composite in a mflHC panel  
antibodies crucial.



Here an mflHC panel with 15 antibodies used at the same time. Image provided by Dr. Niclas C Blessin.



# MSVA website - a useful guide for our antibody users.

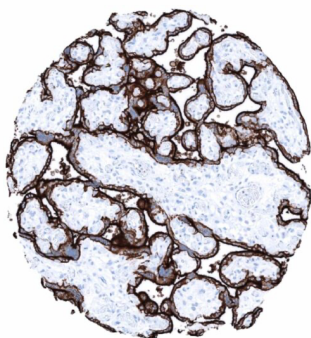
We provide our own data as well as links to other relevant sources such as the Human Protein Atlas, the TCGA database or published studies. Most of the information is underlined with images, graphics, and tables.

## Protocol Recommendations

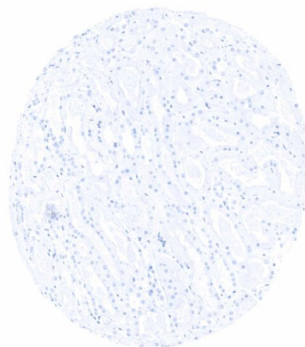
We offer protocol recommendations for manual protocols and autostainers from Dako, Leica and Ventana.

### Agilent / Dako – Autostainer Link 48

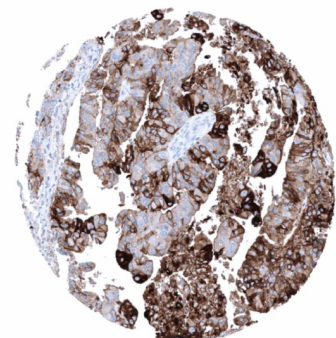
Pretreatment in PT-Link for 30 minutes at 95°C (pH high); FLEX peroxidase blocking for 5 minutes (room temperature), MSVA-350R 1:150 for 20 minutes (room temperature), FLEX+ mouse/rabbit (LINKER) for 15 minutes (room temperature), horseradish peroxidase (HRP) for 20 minutes (room temperature), FLEX DAB+Sub-Chromo for 10 minutes (room temperature), FLEX hematoxylin for 5 minutes (room temperature).



Dako – Placenta



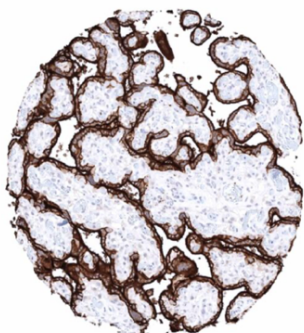
Dako – Kidney



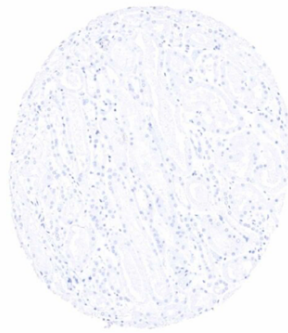
Dako – Esophagus Adenocarcinoma

### Leica – BOND RX

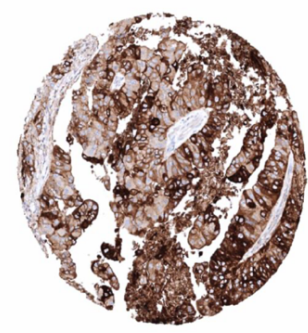
Dewax at 72°C for 30 seconds; Pretreatment in Bond Epitope Retrieval Solution (ER2 – EDTA pH9) for 20 minutes at 100°C; Peroxidase blocking for 5 minutes (room temperature), MSVA-350R 1:150 for 15 minutes (room temperature), Post primary (rabbit anti mouse) for 8 minutes (room temperature), Polymer (goat anti rabbit) for 8 minutes (room temperature), mixed DAB refine for 10 minutes (room temperature), hematoxylin for 5 minutes (room temperature).



Leica – Placenta



Leica – Kidney



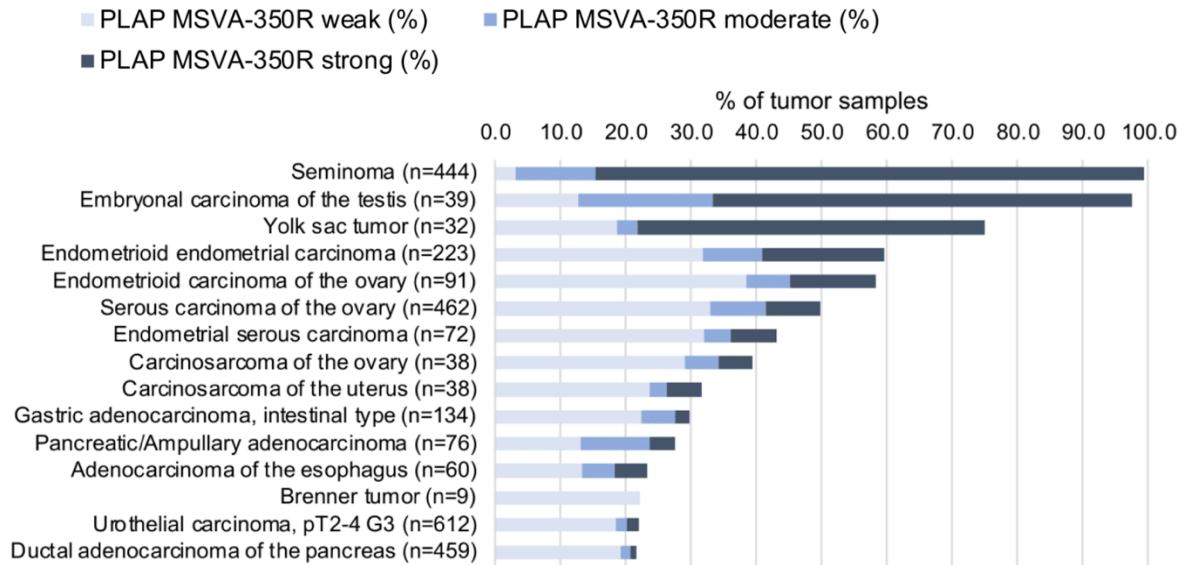
Leica – Esophagus Adenocarcinoma

## Comaptibility of Antibodies

We summarize data from studies that used the MSVA antibodies and our recommended protocols.

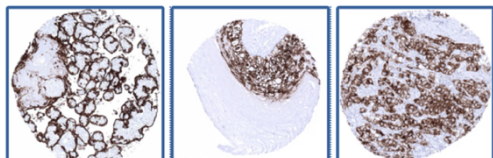
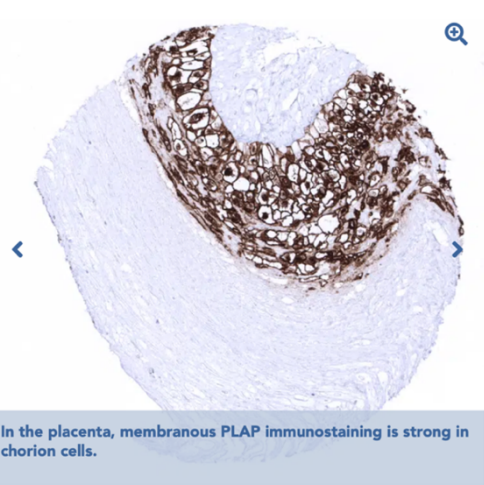
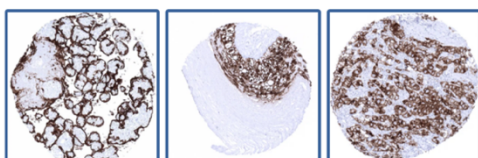
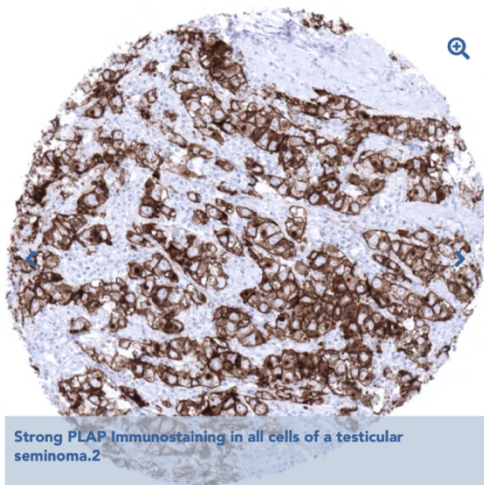
Data from the publication: "[Pattern of placental alkaline phosphatase \(PLAP\) expression in human tumors: a tissue microarray study on 12,381 tumors](#)". Published by Reiswich et al. in the journal of Pathology: Clinical Research, August 7th 2021. Summarized in own graphics:

### 2. PLAP staining in tumors "ranking order" by positivity with antibody MSVA-350R.



## Product details

Comprehensive and visualized information on staining patterns in tumors.





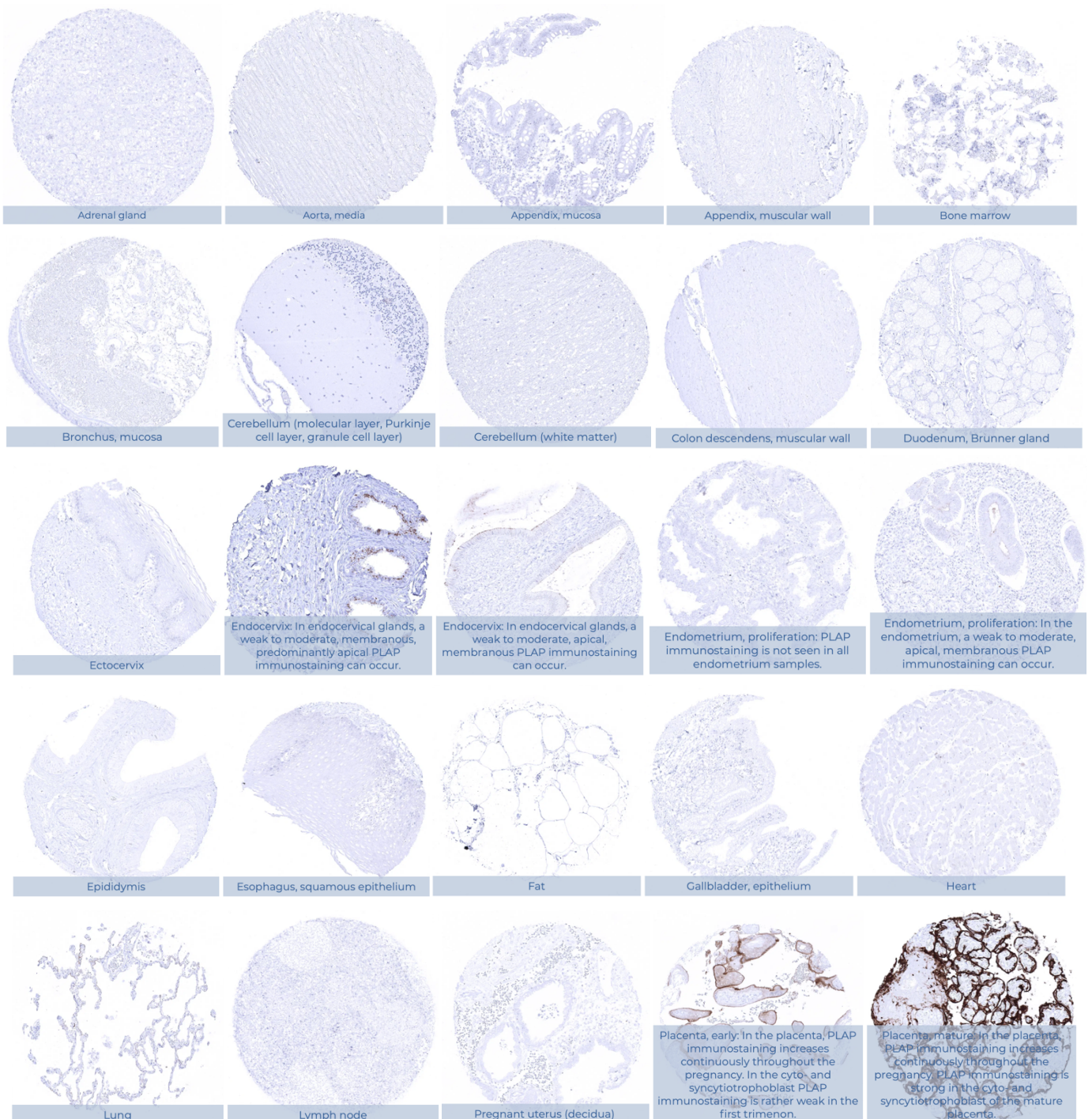
## Normal tissue gallery

## Cancer tissue gallery

A gallery for normal and tumor tissues is supplied with each antibody. The gallery contains more than 50 normal tissues. The images serve as a reference as to what staining can be expected with the proposed protocol using the MSVA antibodies in individual tissue types.

An example of a gallery of normal tissue (>50 tissues) on our website.

An extract of the PLAP (MSVA-350R) normal tissue gallery.





The data on the staining behavior in normal tissue is also represented in a table.

### PLAP – Staining pattern in normal tissues (MSVA-350R)

Brain	Cerebrum	Negative.
	Cerebellum	Negative.
Endocrine Tissues	Thyroid	Negative.
	Parathyroid	Negative.
	Adrenal gland	Negative.
	Pituitary gland	Negative.
Respiratory system	Respiratory epithelium	Negative.
	Lung	Negative.
Gastrointestinal Tract	Salivary glands	Negative.
	Esophagus	Negative.
	Stomach	Negative.
	Colon	Negative.
	Duodenum	Negative.
	Rectum	Negative.
	Small intestine	Negative.
	Liver	Negative.
	Gallbladder	Negative.
	Pancreas	Negative.
Genitourinary	Kidney	Negative.
	Urothelium	Negative.
Male genital	Prostate	Negative.
	Seminal vesicles	Negative.
	Testis	Negative.
	Epididymis	Negative.
Female genital	Breast	Negative.
	Uterus, ectocervix	Negative.
	Uterus endocervix	A weak PLAP staining can be seen at the surface apical membrane of epithelial cells (not in all samples).
	Uterus, endometrium	A weak PLAP staining can be seen at the surface apical membrane of epithelial cells (not in all samples).
	Fallopian Tube	A weak PLAP staining can be seen at the surface apical membrane of epithelial cells (not in all samples).
	Ovary	Negative.
	Placenta early	PLAP staining is only moderate and limited to the surface cell membrane of trophoblast cells.
	Placenta mature	Strong PLAP staining of the cytotrophoblast and the syncytiotrophoblast.
	Amnion	Weak PLAP staining of amnion cells.

MSVA supports large-scale TMA studies for MSVA antibodies on >10,000 tumors to provide the scientific community with the performance characteristics of each antibody.

The Journal of Pathology: Clinical Research  
J Pathol Clin Res 2021  
Published online in Wiley Online Library  
(wileyonlinelibrary.com). DOI: 10.1002/jcp.237

ORIGINAL ARTICLE

## Pattern of placental alkaline phosphatase (PLAP) expression in human tumors: a tissue microarray study on 12,381 tumors

Viktor Reischwich<sup>1</sup>, Natalia Gorbokov<sup>1</sup>, Andreas M Luebke<sup>1</sup>, Eike Burandt<sup>1</sup>, Anne Menz<sup>1</sup>, Martina Kluth<sup>1</sup>, Claudia Hube-Magg<sup>1</sup>, Corinna Wittmer<sup>1</sup>, Sören Weidemann<sup>1</sup>, Christoph Fraune<sup>1</sup>, Katharina Möller<sup>1</sup>, Patrick Lebok<sup>1</sup>, Guido Sauter<sup>1</sup>, Ronald Simon<sup>1\*</sup>, Ria Uhlig<sup>1</sup>, Waldemar Wilczak<sup>1</sup>, Frank Jacobsen<sup>1</sup>, Sarah Minner<sup>1</sup>, Rainer Krech<sup>2</sup>, Christian Bernreuther<sup>1</sup>, Andreas Marx<sup>1,3</sup>, Stefan Steurer<sup>1</sup>, Till Clauditz<sup>1</sup> and Till Krech<sup>2</sup>

<sup>1</sup>Institute of Pathology, University Medical Center Hamburg-Eppendorf, Hamburg, Germany

<sup>2</sup>Institute of Pathology, Clinical Center Osnabrueck Osnabrueck, Germany

<sup>3</sup>Department of Pathology, Academic Hospital Fuerth, Fuerth, Germany

\*Correspondence to: Ronald Simon, Institute of Pathology, University Medical Center Hamburg-Eppendorf, Martinistr. 52, 20246 Hamburg, Germany. E-mail: r.simon@uke.de

### Abstract

Placental alkaline phosphatase (PLAP) is commonly expressed at high levels in testicular germ cell tumors. PLAP immunohistochemistry (IHC) is thus often used to confirm this diagnosis, especially in cases of putative metastasis. However, other tumors can also express PLAP. To comprehensively determine PLAP expression in normal and tumor tissue, a tissue microarray containing 16,166 samples from 131 different tumor types and subtypes as well as 608 samples from 76 different normal tissue types was analyzed by IHC. Moderate to strong PLAP positivity was found in 27 (21%) of 131 different tumor types including seminoma (96%), embryonal carcinoma (85%), and yolk sac tumors of the testis (56%); endometrioid carcinoma of the endometrium (28%) and the ovary (20%); gastric adenocarcinoma (22%); serous carcinoma (not otherwise specified) of the ovary (17%) and the uterus (11%); adenocarcinoma of the ampulla of Vater (15%); carcinosarcoma of the ovary (11%) and the uterus (8%); esophageal adenocarcinoma (10%); invasive urothelial carcinoma (4%); cholangiocarcinoma (2%); and adenocarcinoma of the lung (1%). Low-level PLAP immunostaining, often involving only a small fraction of tumor cells, was seen in 21 additional tumor entities. The clinical significance of PLAP expression may vary between tumor types as high PLAP expression was linked to advanced pathological tumor stage ( $p = 0.0086$ ), nodal metastasis ( $p = 0.0085$ ), and lymphatic ( $p = 0.0007$ ) and blood vessel invasion ( $p = 0.0222$ ) in colorectal cancer, but to low pathological tumor stage in endometrial cancer ( $p = 0.0043$ ). In conclusion, our data identify several tumor entities that can show PLAP expression at comparable levels to testicular germ cell tumors. These tumor entities need to be considered in cases of PLAP-positive metastasis. Low-level PLAP expression can be found in various other tumor entities and should generally not be viewed as a strong argument for germ cell neoplasia.

Keywords: immunohistochemistry; PLAP; tissue microarray

## PLAP antibody clone MSVA-350R:

Pattern of placental alkaline phosphatase (PLAP) expression in human tumors: a tissue microarray study on 12,381 tumors

Reischwich et al. The Journal of Pathology: Clinical Research, August 7th 2021

## Carboxypeptidase A1 (CPA1) Immunohistochemistry Is Highly Sensitive and Specific for Acinar Cell Carcinoma (ACC) of the Pancreas.

Uhlig R<sup>1</sup>, Contreras H<sup>1</sup>, Weidemann S<sup>1</sup>, Gorbokov N<sup>1</sup>, Menz A<sup>1</sup>, Büschek F<sup>1</sup>, Luebke AM<sup>1</sup>, Kluth M<sup>1</sup>, Hube-Magg C<sup>1</sup>, Hinsch A<sup>1</sup>, Höfelmayer D<sup>1</sup>, Fraune C<sup>1</sup>, Möller K<sup>1</sup>, Bernreuther C<sup>1</sup>, Lebok P<sup>1</sup>, Sauter G<sup>1</sup>, Wilczak W<sup>1</sup>, Izbicki J<sup>2</sup>, Perez D<sup>2</sup>, Schrader J<sup>2</sup>, Steurer S<sup>1</sup>, Burandt E<sup>1</sup>, Krech R<sup>3</sup>, Dum D<sup>1</sup>, Krech T<sup>1</sup>, Marx A<sup>1</sup>, Simon R<sup>1</sup>, Minner S<sup>1</sup>, Jacobsen F<sup>1</sup>, Clauditz TS<sup>1</sup>

Show less

### Author information

The American Journal of Surgical Pathology, 01 Jan 2022, 46(1):97-104  
DOI: 10.1097/pas.0000000000001817 PMID: 34889867 PMCID: PMC8860221

Free to read & use

Share this article

### Abstract

Carboxypeptidase A1 (CPA1) is a zinc metalloprotease that is produced in pancreatic acinar cells and plays a role in cleaving C-terminal branched-chain and aromatic amino acids from dietary proteins. This study assessed the utility of immunohistochemical CPA1 staining for diagnosing pancreatic acinar cell carcinoma (ACC). A total of 12,274 tumor samples from 132 different tumor types and subtypes as well as 8 samples each of 76 different normal tissue types were interpretable by immunohistochemistry in a tissue microarray format. CPA1 was strongly expressed in acinar cells of all normal pancreas samples but not in any other normal tissues. CPA1 immunostaining was detected in 100% of 11 pancreatic ACCs and 1 mixed acinar endocrine carcinoma, but absent in 449 pancreatic ductal adenocarcinomas, 75 adenocarcinomas of the ampulla Vateri, and 11,739 other evaluable cancers from 128 different tumor entities. A weak to moderate diffuse staining of epithelial and stromal cells of cancer tissues immediately adjacent to non-neoplastic pancreatic acinar cells often occurred and was considered to be caused by the diffusion of the highly abundant CPA1 from normal acinar cells that may have suffered some autolytic cell damage. In conclusion, our data show that CPA1 is a highly sensitive and largely specific marker for normal and neoplastic pancreatic acinar cells. CPA1 immunohistochemistry greatly facilitates the otherwise often difficult diagnosis of pancreatic ACC.

## CPA1 antibody clone MSVA-601M:

Carboxypeptidase A1 (CPA1) Immunohistochemistry Is Highly Sensitive and Specific for Acinar Cell Carcinoma (ACC) of the Pancreas.

Uhlig R et al. Am J Surg Pathol, January 1<sup>st</sup> 2022: 97-104.

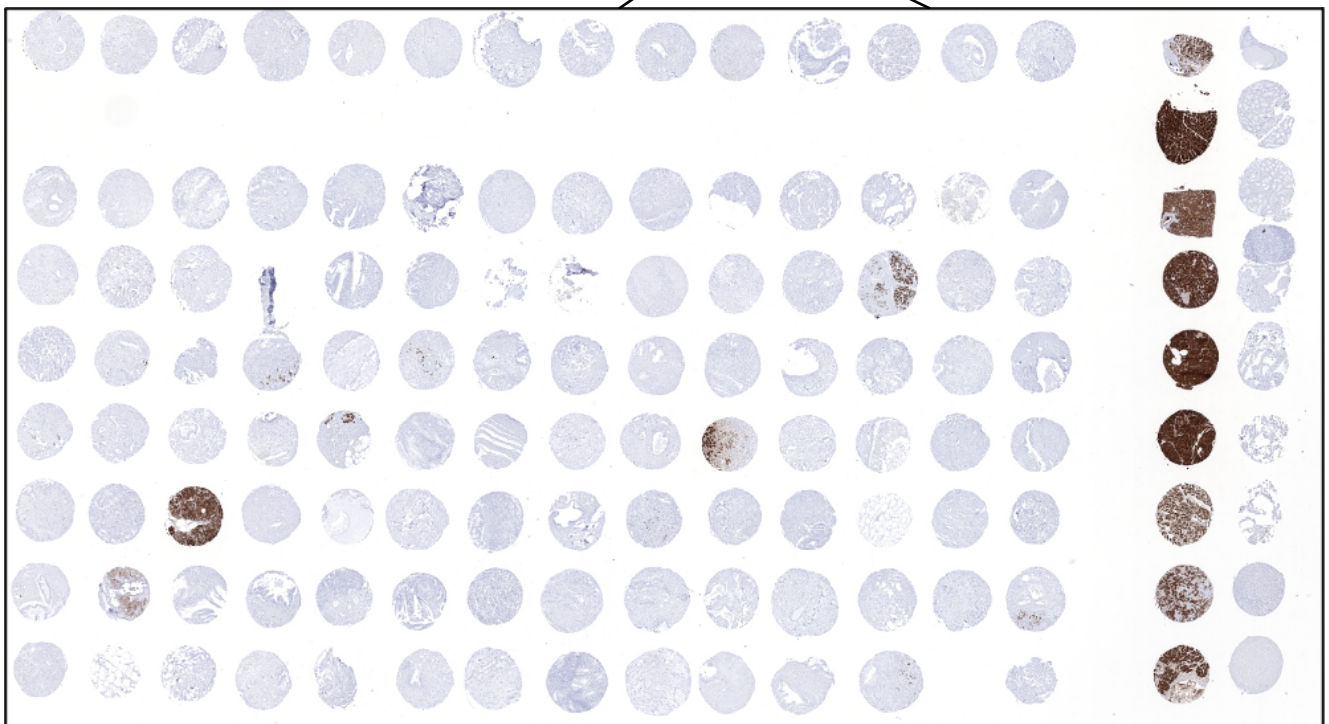
## Further Studies

**DOG1 antibody clone MSVA-201M:** DOG1 expression is common in human tumors: A tissue microarray study on more than 15,000 tissue samples. Jansen et al. Pathology – Research and Practice Volume 228: December 2021

**Cytokeratin 5 (MSVA-605M) & Cytokeratin 6 (MSVA-606R):** Cytokeratin 5 and cytokeratin 6 expressions are unconnected in normal and cancerous tissues and have separate diagnostic implications. Völkel et al. Virchow Archiv published online; September 24th 2021 – ACE2

**Mesothelin antibody clone MSVA-235M:** Mesothelin Expression in Human Tumors: A Tissue Microarray Study on 12,679 Tumors. Weidemann et al. Biomedicine 2021, 9, 397.





CPA1 (MSVA-601M) study (approx. 6,000 of 12,274 tumors)

# Antibody index

## A

ACE2  
AIF1  
Androgen Receptor  
Arginase-1

## C

Calbindin 1  
Caldesmon  
Calponin  
CD1a  
CD3  
CD4  
CD5  
CD7  
CD8  
CD20  
CD22  
CD23  
CD27  
CD31  
CD34  
CD45  
CD45RA  
CD141  
CD163  
CDH16  
CDH17  
CEA  
CELA3B  
Chromogranin A  
Collagen IV  
CPA1 / Carboxypeptidase A1  
CTLA-4 /CD152  
Cystatin A  
Cytokeratin 5  
Cytokeratin 6  
Cytokeratin 7  
Cytokeratin 10  
Cytokeratin 13  
Cytokeratin 14  
Cytokeratin 15  
Cytokeratin 18  
Cytokeratin 19  
Cytokeratin 20  
Cytokeratin Pan

## D

Decorin  
Desmin  
Desmoglein 1  
Desmoglein 3  
DOG-1

## E

E-Cadherin  
Elastin  
EpCAM  
Estrogen Receptor

## F

FABP1  
FABP4  
Factor 13 alpha

## G

GAD2  
GATA3  
GFAP  
Glutamine Synthetase  
GLUT1  
GP2

## H

Helicobacter Pylori  
Hepatocyte Specific  
HER2  
HLA-DRa

## I

IgA  
Inhibin alpha  
INSM1

## K

Ki-67  
KLK7

**M**

Mammaglobin  
 MBP / Myelin Basic Protein  
 MCM3  
 MCM7  
 Melan A CR (cross reactive)  
 Melan A specific  
 Mesothelin  
 MPO/ Myeloperoxidase  
 MSH2  
 MSH6  
 MUC1  
 MUC5AC  
 MUC6  
 MyoD1  
 Myosin Heavy Chain 11

**N**

Napsin A  
 NSE gamma  
 Nucleolin

**P**

p16  
 p53  
 p63  
 PAPP-A  
 PD-L1  
 Periostin  
 PGP9.5  
 PHH3  
 PLAP  
 PMEL17 / gp100  
 Progesterone Receptor  
 PSA  
 PSAP / ACP3 / ACPP  
 PTH

**S**

S100  
 S100A12  
 100P  
 SATB2  
 Somatostatin  
 STAR  
 Synaptophysin

**T**

TACSTD2 / Trop2  
 TdT  
 Thyroglobulin  
 TIM3  
 TOP2A / TOPO2A  
 TRIM29

**U**

Uroplakin 1A  
 Uroplakin 1B  
 Uroplakin 3B

**V**

Villin  
 Vimentin  
 Vwf

**X**

XRCC5/Ku-p80

**Z**

ZAP-70

<b>ACE2</b>		<b>Format</b>	<b>Status</b>	<b>Dilution</b>	<b>Volume</b>	<b>Catalog Number</b>	<b>Price*</b>
<b>Clone</b>	<b>MSVA-919R</b>	conc.	RUO	100-200	0,1 ml	3319-919R-01	295,00 €
Host	Recombinant Rabbit	conc.	RUO	100-200	0,5 ml	3319-919R-05	595,00 €
Isotype	IgG	conc.	RUO	100-200	1 ml	3319-919R-1	995,00 €

<b>AIF1</b>		<b>Format</b>	<b>Status</b>	<b>Dilution</b>	<b>Volume</b>	<b>Catalog Number</b>	<b>Price*</b>
<b>Clone</b>	<b>MSVA-955M</b>	conc.	RUO	100-200	0,1 ml	4444-955M-01	295,00 €
Host	Mouse	conc.	RUO	100-200	0,5 ml	4444-955M-05	545,00 €
Isotype	IgG	conc.	RUO	100-200	1 ml	4444-955M-1	895,00 €

<b>Androgen Receptor</b>		<b>Format</b>	<b>Status</b>	<b>Dilution</b>	<b>Volume</b>	<b>Catalog Number</b>	<b>Price*</b>
<b>Clone</b>	<b>MSVA-367R</b>	conc.	RUO	100-200	0,1 ml	2145-367R-01	295,00 €
Host	Recombinant Rabbit	conc.	RUO	100-200	0,5 ml	2145-367R-05	595,00 €
Isotype	IgG	conc.	RUO	100-200	1 ml	2145-367R-1	995,00 €

<b>Arginase-1</b>		<b>Format</b>	<b>Status</b>	<b>Dilution</b>	<b>Volume</b>	<b>Catalog Number</b>	<b>Price*</b>
<b>Clone</b>	<b>MSVA-511R</b>	conc.	RUO	100-200	0,1 ml	3320-511R-01	295,00 €
Host	Recombinant Rabbit	conc.	RUO	100-200	0,5 ml	3320-511R-05	595,00 €
Isotype	IgG	conc.	RUO	100-200	1 ml	3320-511R-1	995,00 €

<b>Calbindin 1</b>		<b>Format</b>	<b>Status</b>	<b>Dilution</b>	<b>Volume</b>	<b>Catalog Number</b>	<b>Price*</b>
<b>Clone</b>	<b>MSVA-471M</b>	conc.	RUO	50-100	0,1 ml	3969-471M-01	145,00 €
Host	Mouse	conc.	RUO	50-100	0,5 ml	3969-471M-05	375,00 €
Isotype	IgG	conc.	RUO	50-100	1 ml	3969-471M-1	595,00 €

<b>Caldesmon</b>		<b>Format</b>	<b>Status</b>	<b>Dilution</b>	<b>Volume</b>	<b>Catalog Number</b>	<b>Price*</b>
<b>Clone</b>	<b>MSVA-538R</b>	conc.	RUO	100-200	0,1 ml	3859-538R-01	295,00 €
Host	Recombinant Rabbit	conc.	RUO	100-200	0,5 ml	3859-538R-05	595,00 €
Isotype	IgG	conc.	RUO	100-200	1 ml	3859-538R-1	995,00 €

<b>Calponin</b>		<b>Format</b>	<b>Status</b>	<b>Dilution</b>	<b>Volume</b>	<b>Catalog Number</b>	<b>Price*</b>
<b>Clone</b>	<b>MSVA-455R</b>	conc.	RUO	100-200	0,1 ml	2446-455R-01	295,00 €
Host	Recombinant Rabbit	conc.	RUO	100-200	0,5 ml	2446-455R-05	545,00 €
Isotype	IgG	conc.	RUO	100-200	1 ml	2446-455R-1	895,00 €

<b>CD1a</b>		<b>Format</b>	<b>Status</b>	<b>Dilution</b>	<b>Volume</b>	<b>Catalog Number</b>	<b>Price*</b>
<b>Clone</b>	<b>MSVA-001M</b>	conc.	RUO	100-200	0,1 ml	2682-001M-01	295,00 €
Host	Recombinant Mouse	conc.	RUO	100-200	0,5 ml	2682-001M-05	595,00 €
Isotype	IgG	conc.	RUO	100-200	1 ml	2682-001M-1	995,00 €

<b>CD3</b>		<b>Format</b>	<b>Status</b>	<b>Dilution</b>	<b>Volume</b>	<b>Catalog Number</b>	<b>Price*</b>
<b>Clone</b>	<b>MSVA-003R</b>	conc.	RUO	100-200	0,1 ml	2465-003R-01	295,00 €
Host	Recombinant Rabbit	conc.	RUO	100-200	0,5 ml	2465-003R-05	595,00 €
Isotype	IgG	conc.	RUO	100-200	1 ml	2465-003R-1	995,00 €

\*Price not including VAT

CD4		Format	Status	Dilution	Volume	Catalog Number	Price*
Clone	<b>MSVA-004R</b>	conc.	RUO	100-200	0,1 ml	2278-004R-01	295,00 €
Host	Recombinant Rabbit	conc.	RUO	100-200	0,5 ml	2278-004R-05	595,00 €
Isotype	IgG	conc.	RUO	100-200	1 ml	2278-004R-1	995,00 €

CD5		Format	Status	Dilution	Volume	Catalog Number	Price*
Clone	<b>MSVA-005R</b>	conc.	RUO	100-200	0,1 ml	3323-005R-01	295,00 €
Host	Recombinant Rabbit	conc.	RUO	100-200	0,5 ml	3323-005R-05	595,00 €
Isotype	IgG	conc.	RUO	100-200	1 ml	3323-005R-1	995,00 €

CD7		Format	Status	Dilution	Volume	Catalog Number	Price*
Clone	<b>MSVA-007R</b>	conc.	RUO	100-200	0,1 ml	2471-007R-01	295,00 €
Host	Recombinant Rabbit	conc.	RUO	100-200	0,5 ml	2471-007R-05	595,00 €
Isotype	IgG	conc.	RUO	100-200	1 ml	2471-007R-1	995,00 €

CD8		Format	Status	Dilution	Volume	Catalog Number	Price*
Clone	<b>MSVA-008R</b>	conc.	RUO	100-200	0,1 ml	2474-008R-01	295,00 €
Host	Recombinant Rabbit	conc.	RUO	100-200	0,5 ml	2474-008R-05	595,00 €
Isotype	IgG	conc.	RUO	100-200	1 ml	2474-008R-1	995,00 €

CD20		Format	Status	Dilution	Volume	Catalog Number	Price*
Clone	<b>MSVA-020R</b>	conc.	RUO	100-200	0,1 ml	2483-020R-01	145,00 €
Host	Recombinant Rabbit	conc.	RUO	100-200	0,5 ml	2483-020R-05	445,00 €
Isotype	IgG	conc.	RUO	100-200	1 ml	2483-020R-1	695,00 €

CD22		Format	Status	Dilution	Volume	Catalog Number	Price*
Clone	<b>MSVA-022R</b>	conc.	RUO	100-200	0,1 ml	2492-022R-01	295,00 €
Host	Recombinant Rabbit	conc.	RUO	100-200	0,5 ml	2492-022R-05	545,00 €
Isotype	IgG	conc.	RUO	100-200	1 ml	2492-022R-1	895,00 €

CD23		Format	Status	Dilution	Volume	Catalog Number	Price*
Clone	<b>MSVA-023M</b>	conc.	RUO	100-200	0,1 ml	4594-023M-01	295,00 €
Host	Mouse	conc.	RUO	100-200	0,5 ml	4594-023M-05	595,00 €
Isotype	IgG	conc.	RUO	100-200	1 ml	4594-023M-1	995,00 €

CD27		Format	Status	Dilution	Volume	Catalog Number	Price*
Clone	<b>MSVA-027M</b>	conc.	RUO	100-200	0,1 ml	2503-027M-01	295,00 €
Host	Mouse	conc.	RUO	100-200	0,5 ml	2503-027M-05	595,00 €
Isotype	IgG	conc.	RUO	100-200	1 ml	2503-027M-1	995,00 €

CD31		Format	Status	Dilution	Volume	Catalog Number	Price*
Clone	<b>MSVA-031M</b>	conc.	RUO	100-200	0,1 ml	2517-031M-01	145,00 €
Host	Mouse	conc.	RUO	100-200	0,5 ml	2517-031M-05	375,00 €
Isotype	IgG	conc.	RUO	100-200	1 ml	2517-031M-1	595,00 €

\*Price not including VAT

<b>CD34</b>		<b>Format</b>	<b>Status</b>	<b>Dilution</b>	<b>Volume</b>	<b>Catalog Number</b>	<b>Price*</b>
<b>Clone</b>	<b>MSVA-034R</b>	conc.	RUO	100-200	0,1 ml	2431-034R-01	295,00 €
Host	Recombinant Rabbit	conc.	RUO	100-200	0,5 ml	2431-034R-05	545,00 €
Isotype	IgG	conc.	RUO	100-200	1 ml	2431-034R-1	895,00 €

<b>CD45</b>		<b>Format</b>	<b>Status</b>	<b>Dilution</b>	<b>Volume</b>	<b>Catalog Number</b>	<b>Price*</b>
<b>Clone</b>	<b>MSVA-045R</b>	conc.	RUO	100-200	0,1 ml	3333-045R-01	145,00 €
Host	Recombinant Rabbit	conc.	RUO	100-200	0,5 ml	3333-045R-05	375,00 €
Isotype	IgG	conc.	RUO	100-200	1 ml	3333-045R-1	595,00 €

<b>CD45RA</b>		<b>Format</b>	<b>Status</b>	<b>Dilution</b>	<b>Volume</b>	<b>Catalog Number</b>	<b>Price*</b>
<b>Clone</b>	<b>MSVA-472M</b>	conc.	RUO	100-200	0,1 ml	2193-472M-01	145,00 €
Host	Mouse	conc.	RUO	100-200	0,5 ml	2193-472M-05	375,00 €
Isotype	IgG	conc.	RUO	100-200	1 ml	2193-472M-1	595,00 €

<b>CD141</b>		<b>Format</b>	<b>Status</b>	<b>Dilution</b>	<b>Volume</b>	<b>Catalog Number</b>	<b>Price*</b>
<b>Clone</b>	<b>MSVA-141M</b>	conc.	RUO	100-200	0,1 ml	4706-141M-01	295,00 €
Host	Recombinant Mouse	conc.	RUO	100-200	0,5 ml	4706-141M-05	595,00 €
Isotype	IgG	conc.	RUO	100-200	1 ml	4706-141M-1	995,00 €

<b>CD163</b>		<b>Format</b>	<b>Status</b>	<b>Dilution</b>	<b>Volume</b>	<b>Catalog Number</b>	<b>Price*</b>
<b>Clone</b>	<b>MSVA-163M</b>	conc.	RUO	100-200	0,1 ml	2335-163M-01	295,00 €
Host	Mouse	conc.	RUO	100-200	0,5 ml	2335-163M-05	595,00 €
Isotype	IgG	conc.	RUO	100-200	1 ml	2335-163M-1	995,00 €

<b>CDH16</b>		<b>Format</b>	<b>Status</b>	<b>Dilution</b>	<b>Volume</b>	<b>Catalog Number</b>	<b>Price*</b>
<b>Clone</b>	<b>MSVA-516R</b>	conc.	RUO	100-200	0,1 ml	4036-516R-01	395,00 €
Host	Recombinant Rabbit	conc.	RUO	100-200	0,5 ml	4036-516R-05	795,00 €
Isotype	IgG	conc.	RUO	100-200	1 ml	4036-516R-1	1.495,00 €

<b>CDH17</b>		<b>Format</b>	<b>Status</b>	<b>Dilution</b>	<b>Volume</b>	<b>Catalog Number</b>	<b>Price*</b>
<b>Clone</b>	<b>MSVA-517M</b>	conc.	RUO	100-200	0,1 ml	3687-517M-01	295,00 €
Host	Mouse	conc.	RUO	100-200	0,5 ml	3687-517M-05	545,00 €
Isotype	IgG	conc.	RUO	100-200	1 ml	3687-517M-1	895,00 €

<b>CEA</b>		<b>Format</b>	<b>Status</b>	<b>Dilution</b>	<b>Volume</b>	<b>Catalog Number</b>	<b>Price*</b>
<b>Clone</b>	<b>MSVA-465R</b>	conc.	RUO	100-200	0,1 ml	2563-465R-01	145,00 €
Host	Recombinant Rabbit	conc.	RUO	100-200	0,5 ml	2563-465R-05	375,00 €
Isotype	IgG	conc.	RUO	100-200	1 ml	2563-465R-1	595,00 €

<b>CELA3B</b>		<b>Format</b>	<b>Status</b>	<b>Dilution</b>	<b>Volume</b>	<b>Catalog Number</b>	<b>Price*</b>
<b>Clone</b>	<b>MSVA-410M</b>	conc.	RUO	100-200	0,1 ml	3682-410M-01	295,00 €
Host	Recombinant Mouse	conc.	RUO	100-200	0,5 ml	3682-410M-05	595,00 €
Isotype	IgG	conc.	RUO	100-200	1 ml	3682-410M-1	995,00 €

\*Price not including VAT

<b>Chromogranin A</b>		<b>Format</b>	<b>Status</b>	<b>Dilution</b>	<b>Volume</b>	<b>Catalog Number</b>	<b>Price*</b>
<b>Clone</b>	<b>MSVA-380R</b>	conc.	RUO	100-200	0,1 ml	2175-380R-01	295,00 €
<b>Host</b>	Recombinant Rabbit	conc.	RUO	100-200	0,5 ml	2175-380R-05	595,00 €
<b>Isotype</b>	IgG	conc.	RUO	100-200	1 ml	2175-380R-1	995,00 €

<b>Collagen IV</b>		<b>Format</b>	<b>Status</b>	<b>Dilution</b>	<b>Volume</b>	<b>Catalog Number</b>	<b>Price*</b>
<b>Clone</b>	<b>MSVA-704R</b>	conc.	RUO	100-200	0,1 ml	3365-704R-01	295,00 €
<b>Host</b>	Recombinant Rabbit	conc.	RUO	100-200	0,5 ml	3365-704R-05	545,00 €
<b>Isotype</b>	IgG	conc.	RUO	100-200	1 ml	3365-704R-1	895,00 €

<b>CPA1 / Carboxypeptidase A1</b>		<b>Format</b>	<b>Status</b>	<b>Dilution</b>	<b>Volume</b>	<b>Catalog Number</b>	<b>Price*</b>
<b>Clone</b>	<b>MSVA-601M</b>	conc.	RUO	100-200	0,1 ml	3354-601M-01	395,00 €
<b>Host</b>	Mouse	conc.	RUO	100-200	0,5 ml	3354-601M-05	795,00 €
<b>Isotype</b>	IgG	conc.	RUO	100-200	1 ml	3354-601M-1	1.495,00 €

<b>CTLA-4 / CD152</b>		<b>Format</b>	<b>Status</b>	<b>Dilution</b>	<b>Volume</b>	<b>Catalog Number</b>	<b>Price*</b>
<b>Clone</b>	<b>MSVA-152R</b>	conc.	RUO	50-100	0,1 ml	3451-152R-01	445,00 €
<b>Host</b>	Recombinant Rabbit	conc.	RUO	50-100	0,5 ml	3451-152R-05	1.675,00€
<b>Isotype</b>	IgG	conc.	RUO	50-100	1 ml	3451-152R-1	2.995,00 €

<b>Cystatin A</b>		<b>Format</b>	<b>Status</b>	<b>Dilution</b>	<b>Volume</b>	<b>Catalog Number</b>	<b>Price*</b>
<b>Clone</b>	<b>MSVA-461M</b>	conc.	RUO	100-200	0,1 ml	3938-461M-01	195,00 €
<b>Host</b>	Mouse	conc.	RUO	100-200	0,5 ml	3938-461M-05	445,00 €
<b>Isotype</b>	IgG	conc.	RUO	100-200	1 ml	3938-461M-1	695,00 €

<b>Cytokeratin 5</b>		<b>Format</b>	<b>Status</b>	<b>Dilution</b>	<b>Volume</b>	<b>Catalog Number</b>	<b>Price*</b>
<b>Clone</b>	<b>MSVA-605M</b>	conc.	RUO	100-200	0,1 ml	2608-605M-01	195,00 €
<b>Host</b>	Recombinant Mouse	conc.	RUO	100-200	0,5 ml	2608-605M-05	445,00 €
<b>Isotype</b>	IgG	conc.	RUO	100-200	1 ml	2608-605M-1	695,00 €

<b>Cytokeratin 6</b>		<b>Format</b>	<b>Status</b>	<b>Dilution</b>	<b>Volume</b>	<b>Catalog Number</b>	<b>Price*</b>
<b>Clone</b>	<b>MSVA-606R</b>	conc.	RUO	100-200	0,1 ml	2616-606R-01	195,00 €
<b>Host</b>	Recombinant Rabbit	conc.	RUO	100-200	0,5 ml	2616-606R-05	445,00 €
<b>Isotype</b>	IgG	conc.	RUO	100-200	1 ml	2616-606R-1	695,00 €

<b>Cytokeratin 7</b>		<b>Format</b>	<b>Status</b>	<b>Dilution</b>	<b>Volume</b>	<b>Catalog Number</b>	<b>Price*</b>
<b>Clone</b>	<b>MSVA-607R</b>	conc.	RUO	100-200	0,1 ml	2230-607R-01	195,00 €
<b>Host</b>	Recombinant Rabbit	conc.	RUO	100-200	0,5 ml	2230-607R-05	445,00 €
<b>Isotype</b>	IgG	conc.	RUO	100-200	1 ml	2230-607R-1	695,00 €

<b>Cytokeratin 10</b>		<b>Format</b>	<b>Status</b>	<b>Dilution</b>	<b>Volume</b>	<b>Catalog Number</b>	<b>Price*</b>
<b>Clone</b>	<b>MSVA-610M</b>	conc.	RUO	100-200	0,1 ml	2593-610M-01	195,00 €
<b>Host</b>	Recombinant Mouse	conc.	RUO	100-200	0,5 ml	2593-610M-05	445,00 €
<b>Isotype</b>	IgG	conc.	RUO	100-200	1 ml	2593-610M-1	695,00 €

\*Price not including VAT



<b>Cytokeratin 13</b>		<b>Format</b>	<b>Status</b>	<b>Dilution</b>	<b>Volume</b>	<b>Catalog Number</b>	<b>Price*</b>
<b>Clone</b>	<b>MSVA-613M</b>	conc.	RUO	100-200	0,1 ml	2373-613M-01	195,00 €
Host	Mouse	conc.	RUO	100-200	0,5 ml	2373-613M-05	445,00 €
Isotype	IgG	conc.	RUO	100-200	1 ml	2373-613M-1	695,00 €

<b>Cytokeratin 14</b>		<b>Format</b>	<b>Status</b>	<b>Dilution</b>	<b>Volume</b>	<b>Catalog Number</b>	<b>Price*</b>
<b>Clone</b>	<b>MSVA-614R</b>	conc.	RUO	100-200	0,1 ml	2256-614R-01	195,00 €
Host	Recombinant Rabbit	conc.	RUO	100-200	0,5 ml	2256-614R-05	445,00 €
Isotype	IgG	conc.	RUO	100-200	1 ml	2256-614R-1	695,00 €

<b>Cytokeratin 15</b>		<b>Format</b>	<b>Status</b>	<b>Dilution</b>	<b>Volume</b>	<b>Catalog Number</b>	<b>Price*</b>
<b>Clone</b>	<b>MSVA-615M</b>	conc.	RUO	50-100	0,1 ml	2748-615M-01	195,00 €
Host	Mouse	conc.	RUO	50-100	0,5 ml	2748-615M-05	445,00 €
Isotype	IgG	conc.	RUO	50-100	1 ml	2748-615M-1	695,00 €

<b>Cytokeratin 18</b>		<b>Format</b>	<b>Status</b>	<b>Dilution</b>	<b>Volume</b>	<b>Catalog Number</b>	<b>Price*</b>
<b>Clone</b>	<b>MSVA-118R</b>	conc.	RUO	100-200	0,1 ml	2205-118R-01	195,00 €
Host	Recombinant Rabbit	conc.	RUO	100-200	0,5 ml	2205-118R-05	445,00 €
Isotype	IgG	conc.	RUO	100-200	1 ml	2205-118R-1	695,00 €

<b>Cytokeratin 19</b>		<b>Format</b>	<b>Status</b>	<b>Dilution</b>	<b>Volume</b>	<b>Catalog Number</b>	<b>Price*</b>
<b>Clone</b>	<b>MSVA-119M</b>	conc.	RUO	100-200	0,1 ml	2273-119M-01	195,00 €
Host	Mouse	conc.	RUO	100-200	0,5 ml	2273-119M-05	445,00 €
Isotype	IgG	conc.	RUO	100-200	1 ml	2273-119M-1	695,00 €

<b>Cytokeratin 20</b>		<b>Format</b>	<b>Status</b>	<b>Dilution</b>	<b>Volume</b>	<b>Catalog Number</b>	<b>Price*</b>
<b>Clone</b>	<b>MSVA-620R</b>	conc.	RUO	100-200	0,1 ml	2238-620R-01	295,00 €
Host	Recombinant Rabbit	conc.	RUO	100-200	0,5 ml	2238-620R-05	595,00 €
Isotype	IgG	conc.	RUO	100-200	1 ml	2238-620R-1	995,00 €

<b>Cytokeratin Pan</b>		<b>Format</b>	<b>Status</b>	<b>Dilution</b>	<b>Volume</b>	<b>Catalog Number</b>	<b>Price*</b>
<b>Clone</b>	<b>MSVA-000R</b>	conc.	RUO	100-200	0,1 ml	2105-000R-01	295,00 €
Host	Recombinant Rabbit	conc.	RUO	100-200	0,5 ml	2105-000R-05	545,00 €
Isotype	IgG	conc.	RUO	100-200	1 ml	2105-000R-1	895,00 €

<b>Decorin</b>		<b>Format</b>	<b>Status</b>	<b>Dilution</b>	<b>Volume</b>	<b>Catalog Number</b>	<b>Price*</b>
<b>Clone</b>	<b>MSVA-537R</b>	conc.	RUO	100-200	0,1 ml	4408-537R-01	295,00 €
Host	Recombinant Rabbit	conc.	RUO	100-200	0,5 ml	4408-537R-05	595,00 €
Isotype	IgG	conc.	RUO	100-200	1 ml	4408-537R-1	995,00 €

<b>Desmin</b>		<b>Format</b>	<b>Status</b>	<b>Dilution</b>	<b>Volume</b>	<b>Catalog Number</b>	<b>Price*</b>
<b>Clone</b>	<b>MSVA-651M</b>	conc.	RUO	100-200	0,1 ml	2732-651M-01	195,00 €
Host	Recombinant Mouse	conc.	RUO	100-200	0,5 ml	2732-651M-05	445,00 €
Isotype	IgG	conc.	RUO	100-200	1 ml	2732-651M-1	695,00 €

\*Price not including VAT



<b>Desmoglein 1</b>		<b>Format</b>	<b>Status</b>	<b>Dilution</b>	<b>Volume</b>	<b>Catalog Number</b>	<b>Price*</b>
<b>Clone</b>	<b>MSVA-544M</b>	conc.	RUO	75-150	0,1 ml	4420-544M-01	295,00 €
Host	Mouse	conc.	RUO	75-150	0,5 ml	4420-544M-05	545,00 €
Isotype	IgG	conc.	RUO	75-150	1 ml	4420-544M-1	895,00 €

<b>Desmoglein 3</b>		<b>Format</b>	<b>Status</b>	<b>Dilution</b>	<b>Volume</b>	<b>Catalog Number</b>	<b>Price*</b>
<b>Clone</b>	<b>MSVA-543M</b>	conc.	RUO	75-150	0,1 ml	4355-543M-01	295,00 €
Host	Mouse	conc.	RUO	75-150	0,5 ml	4355-543M-05	545,00 €
Isotype	IgG	conc.	RUO	75-150	1 ml	4355-543M-1	895,00 €

<b>DOG-1</b>		<b>Format</b>	<b>Status</b>	<b>Dilution</b>	<b>Volume</b>	<b>Catalog Number</b>	<b>Price*</b>
<b>Clone</b>	<b>MSVA-201M</b>	conc.	RUO	100-200	0,1 ml	2170-201M-01	345,00 €
Host	Mouse	conc.	RUO	100-200	0,5 ml	2170-201M-05	675,00 €
Isotype	IgG	conc.	RUO	100-200	1 ml	2170-201M-1	1.195,00 €

<b>E-cadherin</b>		<b>Format</b>	<b>Status</b>	<b>Dilution</b>	<b>Volume</b>	<b>Catalog Number</b>	<b>Price*</b>
<b>Clone</b>	<b>MSVA-035R</b>	conc.	RUO	100-200	0,1 ml	2140-035R-01	295,00 €
Host	Recombinant Rabbit	conc.	RUO	100-200	0,5 ml	2140-035R-01	595,00 €
Isotype	IgG	conc.	RUO	100-200	1 ml	2140-035R-01	995,00 €

<b>Elastin</b>		<b>Format</b>	<b>Status</b>	<b>Dilution</b>	<b>Volume</b>	<b>Catalog Number</b>	<b>Price*</b>
<b>Clone</b>	<b>MSVA-648R</b>	conc.	RUO	100-200	0,1 ml	4448-648R-01	145,00 €
Host	Recombinant Rabbit	conc.	RUO	100-200	0,5 ml	4448-648R-05	375,00 €
Isotype	IgG	conc.	RUO	100-200	1 ml	4448-648R-1	595,00 €

<b>EpCAM</b>		<b>Format</b>	<b>Status</b>	<b>Dilution</b>	<b>Volume</b>	<b>Catalog Number</b>	<b>Price*</b>
<b>Clone</b>	<b>MSVA-326R</b>	conc.	RUO	100-200	0,1 ml	2315-326R-01	195,00 €
Host	Recombinant Rabbit	conc.	RUO	100-200	0,5 ml	2315-326R-05	445,00 €
Isotype	IgG	conc.	RUO	100-200	1 ml	2315-326R-1	695,00 €

<b>Estrogen Receptor</b>		<b>Format</b>	<b>Status</b>	<b>Dilution</b>	<b>Volume</b>	<b>Catalog Number</b>	<b>Price*</b>
<b>Clone</b>	<b>MSVA-564R</b>	conc.	RUO	100-200	0,1 ml	4670-564R-01	295,00 €
Host	Recombinant Rabbit	conc.	RUO	100-200	0,5 ml	4670-564R-05	695,00 €
Isotype	IgG	conc.	RUO	100-200	1 ml	4670-564R-1	1.245,00 €

<b>Factor 13 alpha</b>		<b>Format</b>	<b>Status</b>	<b>Dilution</b>	<b>Volume</b>	<b>Catalog Number</b>	<b>Price*</b>
<b>Clone</b>	<b>MSVA-813R</b>	conc.	RUO	100-200	0,1 ml	3924-813R-01	295,00 €
Host	Recombinant Rabbit	conc.	RUO	100-200	0,5 ml	3924-813R-05	595,00 €
Isotype	IgG	conc.	RUO	100-200	1 ml	3924-813R-1	995,00 €

<b>FABP1</b>		<b>Format</b>	<b>Status</b>	<b>Dilution</b>	<b>Volume</b>	<b>Catalog Number</b>	<b>Price*</b>
<b>Clone</b>	<b>MSVA-501M</b>	conc.	RUO	100-200	0,1 ml	3737-501M-01	295,00 €
Host	Mouse	conc.	RUO	100-200	0,5 ml	3737-501M-01	595,00 €
Isotype	IgG	conc.	RUO	100-200	1 ml	3737-501M-01	995,00 €

\*Price not including VAT

<b>FABP4</b>		<b>Format</b>	<b>Status</b>	<b>Dilution</b>	<b>Volume</b>	<b>Catalog Number</b>	<b>Price*</b>
<b>Clone</b>	<b>MSVA-504M</b>	conc.	RUO	100-200	0,1 ml	3756-504M-01	295,00 €
Host	Mouse	conc.	RUO	100-200	0,5 ml	3756-504M-05	595,00 €
Isotype	IgG	conc.	RUO	100-200	1 ml	3756-504M-1	995,00 €

<b>GAD2</b>		<b>Format</b>	<b>Status</b>	<b>Dilution</b>	<b>Volume</b>	<b>Catalog Number</b>	<b>Price*</b>
<b>Clone</b>	<b>MSVA-602M</b>	conc.	RUO	100-200	0,1 ml	4975-602M-01	295,00€
Host	Mouse	conc.	RUO	100-200	0,5 ml	4975-602M-05	595,00€
Isotype	IgG	conc.	RUO	100-200	1 ml	4975-602M-1	995,00€

<b>GATA3</b>		<b>Format</b>	<b>Status</b>	<b>Dilution</b>	<b>Volume</b>	<b>Catalog Number</b>	<b>Price*</b>
<b>Clone</b>	<b>MSVA-450M</b>	conc.	RUO	50-100	0,1 ml	2980-450M-01	395,00 €
Host	Mouse	conc.	RUO	50-100	0,5 ml	2980-450M-05	895,00 €
Isotype	IgG	conc.	RUO	50-100	1 ml	2980-450M-1	1.495,00 €

<b>GFAP</b>		<b>Format</b>	<b>Status</b>	<b>Dilution</b>	<b>Volume</b>	<b>Catalog Number</b>	<b>Price*</b>
<b>Clone</b>	<b>MSVA-522M</b>	conc.	RUO	100-200	0,1 ml	3406-522M-01	295,00 €
Host	Mouse	conc.	RUO	100-200	0,5 ml	3406-522M-05	595,00 €
Isotype	IgG	conc.	RUO	100-200	1 ml	3406-522M-1	995,00 €

<b>GLUT1</b>		<b>Format</b>	<b>Status</b>	<b>Dilution</b>	<b>Volume</b>	<b>Catalog Number</b>	<b>Price*</b>
<b>Clone</b>	<b>MSVA-401R</b>	conc.	RUO	100-200	0,1 ml	4457-401R-01	295,00€
Host	Recombinant Rabbit	conc.	RUO	100-200	0,5 ml	4457-401R-05	595,00€
Isotype	IgG	conc.	RUO	100-200	1 ml	4457-401R-1	995,00€

<b>Glutamine Synthetase</b>		<b>Format</b>	<b>Status</b>	<b>Dilution</b>	<b>Volume</b>	<b>Catalog Number</b>	<b>Price*</b>
<b>Clone</b>	<b>MSVA-750M</b>	conc.	RUO	100-200	0,1 ml	4565-750M-01	295,00€
Host	Mouse	conc.	RUO	100-200	0,5 ml	4565-750M-05	545,00€
Isotype	IgG	conc.	RUO	100-200	1 ml	4565-750M-1	895,00€

<b>GP2</b>		<b>Format</b>	<b>Status</b>	<b>Dilution</b>	<b>Volume</b>	<b>Catalog Number</b>	<b>Price*</b>
<b>Clone</b>	<b>MSVA-475M</b>	conc.	RUO	100-200	0,1 ml	3409-475M-01	295,00€
Host	Mouse	conc.	RUO	100-200	0,5 ml	3409-475M-05	595,00€
Isotype	IgG	conc.	RUO	100-200	1 ml	3409-475M-1	995,00€

<b>Helicobacter Pylori</b>		<b>Format</b>	<b>Status</b>	<b>Dilution</b>	<b>Volume</b>	<b>Catalog Number</b>	<b>Price*</b>
<b>Clone</b>	<b>MSVA-466M</b>	conc.	RUO	100-200	0,1 ml	5099—466M-01	345,00€
Host	Mouse	conc.	RUO	100-200	0,5 ml	5099—466M-05	695,00€
Isotype	IgG	conc.	RUO	100-200	1 ml	5099—466M-1	1.095,00€

<b>Hepatocyte Specific</b>		<b>Format</b>	<b>Status</b>	<b>Dilution</b>	<b>Volume</b>	<b>Catalog Number</b>	<b>Price*</b>
<b>Clone</b>	<b>MSVA-OCE5</b>	conc.	RUO	100-200	0,1 ml	5091-OCE5-01	145,00€
Host	Mouse	conc.	RUO	100-200	0,5 ml	5091-OCE5-05	375,00€
Isotype	IgG	conc.	RUO	100-200	1 ml	5091-OCE5-1	595,00€

\*Price not including VAT

<b>HER2</b>		<b>Format</b>	<b>Status</b>	<b>Dilution</b>	<b>Volume</b>	<b>Catalog Number</b>	<b>Price*</b>
<b>Clone</b>	<b>MSVA-340R</b>	conc.	RUO	25-50	0,1 ml	3325-340R-01	345,00 €
Host	Recombinant Rabbit	conc.	RUO	25-50	0,5 ml	3325-340R-05	675,00 €
Isotype	IgG	conc.	RUO	25-50	1 ml	3325-340R-1	1.195,00 €

<b>HLA-DRA</b>		<b>Format</b>	<b>Status</b>	<b>Dilution</b>	<b>Volume</b>	<b>Catalog Number</b>	<b>Price*</b>
<b>Clone</b>	<b>MSVA-470R</b>	conc.	RUO	100-200	0,1 ml	3328-470R-01	295,00 €
Host	Recombinant Rabbit	conc.	RUO	100-200	0,5 ml	3328-470R-05	595,00 €
Isotype	IgG	conc.	RUO	100-200	1 ml	3328-470R-1	995,00 €

<b>IgA</b>		<b>Format</b>	<b>Status</b>	<b>Dilution</b>	<b>Volume</b>	<b>Catalog Number</b>	<b>Price*</b>
<b>Clone</b>	<b>MSVA-700R</b>	conc.	RUO	100-200	0,1 ml	3489-700R-01	295,00€
Host	Recombinant Rabbit	conc.	RUO	100-200	0,5 ml	3489-700R-05	595,00€
Isotype	IgG	conc.	RUO	100-200	1 ml	3489-700R-1	995,00€

<b>Inhibin alpha</b>		<b>Format</b>	<b>Status</b>	<b>Dilution</b>	<b>Volume</b>	<b>Catalog Number</b>	<b>Price*</b>
<b>Clone</b>	<b>MSVA-561R</b>	conc.	RUO	75-150	0,1 ml	2879-561R-01	295,00 €
Host	Recombinant Rabbit	conc.	RUO	75-150	0,5 ml	2879-561R-05	545,00 €
Isotype	IgG	conc.	RUO	75-150	1 ml	2879-561R-1	895,00 €

<b>INSM1</b>		<b>Format</b>	<b>Status</b>	<b>Dilution</b>	<b>Volume</b>	<b>Catalog Number</b>	<b>Price*</b>
<b>Clone</b>	<b>MSVA-456R</b>	conc.	RUO	75-150	0,1 ml	3218-456R-01	295,00 €
Host	Recombinant Rabbit	conc.	RUO	75-150	0,5 ml	3218-456R-05	595,00 €
Isotype	IgG	conc.	RUO	75-150	1 ml	3218-456R-1	995,00 €

<b>Ki-67</b>		<b>Format</b>	<b>Status</b>	<b>Dilution</b>	<b>Volume</b>	<b>Catalog Number</b>	<b>Price*</b>
<b>Clone</b>	<b>MSVA-267M</b>	conc.	RUO	100-200	0,1 ml	2082-267M-01	295,00 €
Host	Mouse	conc.	RUO	100-200	0,5 ml	2082-267M-05	595,00 €
Isotype	IgG	conc.	RUO	100-200	1 ml	2082-267M-1	995,00 €

<b>KLK7</b>		<b>Format</b>	<b>Status</b>	<b>Dilution</b>	<b>Volume</b>	<b>Catalog Number</b>	<b>Price*</b>
<b>Clone</b>	<b>MSVA-707M</b>	conc.	RUO	100-200	0,1 ml	4860-707M-01	295,00€
Host	Mouse	conc.	RUO	100-200	0,5 ml	4860-707M-05	595,00€
Isotype	IgG	conc.	RUO	100-200	1 ml	4860-707M-1	995,00€

<b>Mammaglobin</b>		<b>Format</b>	<b>Status</b>	<b>Dilution</b>	<b>Volume</b>	<b>Catalog Number</b>	<b>Price*</b>
<b>Clone</b>	<b>MSVA-457R</b>	conc.	RUO	100-200	0,1 ml	2668-457R-01	295,00 €
Host	Recombinant Rabbit	conc.	RUO	100-200	0,5 ml	2668-457R-05	545,00 €
Isotype	IgG	conc.	RUO	100-200	1 ml	2668-457R-1	895,00 €

<b>MBP / Myelin Basic Protein</b>		<b>Format</b>	<b>Status</b>	<b>Dilution</b>	<b>Volume</b>	<b>Catalog Number</b>	<b>Price*</b>
<b>Clone</b>	<b>MSVA-390R</b>	conc.	RUO	100-200	0,1 ml	3398-390R-01	195,00 €
Host	Recombinant Rabbit	conc.	RUO	100-200	0,5 ml	3398-390R-05	445,00 €
Isotype	IgG	conc.	RUO	100-200	1 ml	3398-390R-1	695,00 €

\*Price not including VAT

<b>MCM3</b>		<b>Format</b>	<b>Status</b>	<b>Dilution</b>	<b>Volume</b>	<b>Catalog Number</b>	<b>Price*</b>
<b>Clone</b>	<b>MSVA-503M</b>	conc.	RUO	100-200	0,1 ml	3257-503M-01	195,00€
Host	Mouse	conc.	RUO	100-200	0,5 ml	3257-503M-05	495,00€
Isotype	IgG	conc.	RUO	100-200	1 ml	3257-503M-1	745,00€

<b>MCM7</b>		<b>Format</b>	<b>Status</b>	<b>Dilution</b>	<b>Volume</b>	<b>Catalog Number</b>	<b>Price*</b>
<b>Clone</b>	<b>MSVA-507R</b>	conc.	RUO	100-200	0,1 ml	3675-507R-01	295,00€
Host	Recombinant Rabbit	conc.	RUO	100-200	0,5 ml	3675-507R-05	545,00€
Isotype	IgG	conc.	RUO	100-200	1 ml	3675-507R-1	895,00€

<b>Melan A CR (Cross Reactive)</b>		<b>Format</b>	<b>Status</b>	<b>Dilution</b>	<b>Volume</b>	<b>Catalog Number</b>	<b>Price*</b>
<b>Clone</b>	<b>MSVA-901M+</b>	conc.	RUO	100-200	0,1 ml	2359-901M-01	195,00 €
Host	Recombinant Mouse	conc.	RUO	100-200	0,5 ml	2359-901M-05	445,00 €
Isotype	IgG	conc.	RUO	100-200	1 ml	2359-901M-1	695,00 €

<b>Melan A Specific</b>		<b>Format</b>	<b>Status</b>	<b>Dilution</b>	<b>Volume</b>	<b>Catalog Number</b>	<b>Price*</b>
<b>Clone</b>	<b>MSVA-900M</b>	conc.	RUO	100-200	0,1 ml	2352-900M-01	195,00 €
Host	Recombinant Mouse	conc.	RUO	100-200	0,5 ml	2352-900M-05	445,00 €
Isotype	IgG	conc.	RUO	100-200	1 ml	2352-900M-1	695,00 €

<b>Mesothelin</b>		<b>Format</b>	<b>Status</b>	<b>Dilution</b>	<b>Volume</b>	<b>Catalog Number</b>	<b>Price*</b>
<b>Clone</b>	<b>MSVA-235M</b>	conc.	RUO	100-200	0,1 ml	2198-235M-01	245,00 €
Host	Mouse	conc.	RUO	100-200	0,5 ml	2198-235M-05	545,00 €
Isotype	IgG	conc.	RUO	100-200	1 ml	2198-235M-1	895,00 €

<b>MPO/ Myeloperoxidase</b>		<b>Format</b>	<b>Status</b>	<b>Dilution</b>	<b>Volume</b>	<b>Catalog Number</b>	<b>Price*</b>
<b>Clone</b>	<b>MSVA-692M</b>	conc.	RUO	100-200	0,1 ml	4517-692M-01	295,00 €
Host	Mouse	conc.	RUO	100-200	0,5 ml	4517-692M-05	545,00 €
Isotype	IgG	conc.	RUO	100-200	1 ml	4517-692M-1	895,00 €

<b>MSH2</b>		<b>Format</b>	<b>Status</b>	<b>Dilution</b>	<b>Volume</b>	<b>Catalog Number</b>	<b>Price*</b>
<b>Clone</b>	<b>MSVA-902M</b>	conc.	RUO	100-200	0,1 ml	2697-902M-01	295,00 €
Host	Recombinant Mouse	conc.	RUO	100-200	0,5 ml	2697-902M-05	595,00 €
Isotype	IgG	conc.	RUO	100-200	1 ml	2697-902M-1	995,00 €

<b>MSH6</b>		<b>Format</b>	<b>Status</b>	<b>Dilution</b>	<b>Volume</b>	<b>Catalog Number</b>	<b>Price*</b>
<b>Clone</b>	<b>MSVA-906R</b>	conc.	RUO	75-150	0,1 ml	2889-906R-01	295,00 €
Host	Recombinant Rabbit	conc.	RUO	75-150	0,5 ml	2889-906R-05	595,00 €
Isotype	IgG	conc.	RUO	75-150	1 ml	2889-906R-1	995,00 €

<b>MUC1</b>		<b>Format</b>	<b>Status</b>	<b>Dilution</b>	<b>Volume</b>	<b>Catalog Number</b>	<b>Price*</b>
<b>Clone</b>	<b>MSVA-672R</b>	conc.	RUO	75-150	0,1 ml	2551-672R-01	195,00 €
Host	Recombinant Rabbit	conc.	RUO	75-150	0,5 ml	2551-672R-05	445,00 €
Isotype	IgG	conc.	RUO	75-150	1 ml	2551-672R-1	695,00 €

\*Price not including VAT

<b>MUC5AC</b>		<b>Format</b>	<b>Status</b>	<b>Dilution</b>	<b>Volume</b>	<b>Catalog Number</b>	<b>Price*</b>
<b>Clone</b>	<b>MSVA-109M</b>	conc.	RUO	100-200	0,1 ml	2113-109M-01	195,00 €
Host	Recombinant Mouse	conc.	RUO	100-200	0,5 ml	2113-109M-05	445,00 €
Isotype	IgG	conc.	RUO	100-200	1 ml	2113-109M-1	695,00 €

<b>MUC6</b>		<b>Format</b>	<b>Status</b>	<b>Dilution</b>	<b>Volume</b>	<b>Catalog Number</b>	<b>Price*</b>
<b>Clone</b>	<b>MSVA-806R</b>	conc.	RUO	100-200	0,1 ml	2709-806R-91	195,00 €
Host	Recombinant Rabbit	conc.	RUO	100-200	0,5 ml	2709-806R-05	445,00 €
Isotype	IgG	conc.	RUO	100-200	1 ml	2709-806R-1	695,00 €

<b>MyoD1</b>		<b>Format</b>	<b>Status</b>	<b>Dilution</b>	<b>Volume</b>	<b>Catalog Number</b>	<b>Price*</b>
<b>Clone</b>	<b>MSVA-801R</b>	conc.	RUO	100-200	0,1 ml	2924-801R-01	295,00 €
Host	Recombinant Rabbit	conc.	RUO	100-200	0,5 ml	2924-801R-05	545,00 €
Isotype	IgG	conc.	RUO	100-200	1 ml	2924-801R-1	895,00 €

<b>Myosin Heavy Chain 11</b>		<b>Format</b>	<b>Status</b>	<b>Dilution</b>	<b>Volume</b>	<b>Catalog Number</b>	<b>Price*</b>
<b>Clone</b>	<b>MSVA-375R</b>	conc.	RUO	100-200	0,1 ml	2450-375R-01	195,00 €
Host	Recombinant Rabbit	conc.	RUO	100-200	0,5 ml	2450-375R-05	445,00 €
Isotype	IgG	conc.	RUO	100-200	1 ml	2450-375R-1	695,00 €

<b>Napsin A</b>		<b>Format</b>	<b>Status</b>	<b>Dilution</b>	<b>Volume</b>	<b>Catalog Number</b>	<b>Price*</b>
<b>Clone</b>	<b>MSVA-555R</b>	conc.	RUO	100-200	0,1 ml	2138-555R-01	295,00 €
Host	Recombinant Rabbit	conc.	RUO	100-200	0,5 ml	2138-555R-05	545,00 €
Isotype	IgG	conc.	RUO	100-200	1 ml	2138-555R-1	895,00 €

<b>NSE gamma</b>		<b>Format</b>	<b>Status</b>	<b>Dilution</b>	<b>Volume</b>	<b>Catalog Number</b>	<b>Price*</b>
<b>Clone</b>	<b>MSVA-451M</b>	conc.	RUO	100-200	0,1 ml	2453-451M-01	195,00 €
Host	Mouse	conc.	RUO	100-200	0,5 ml	2453-451M-05	445,00 €
Isotype	IgG	conc.	RUO	100-200	1 ml	2453-451M-1	695,00 €

<b>Nucleolin</b>		<b>Format</b>	<b>Status</b>	<b>Dilution</b>	<b>Volume</b>	<b>Catalog Number</b>	<b>Price*</b>
<b>Clone</b>	<b>MSVA-623R</b>	conc.	RUO	100-200	0,1 ml	4108-623R-01	295,00 €
Host	Recombinant Rabbit	conc.	RUO	100-200	0,5 ml	4108-623R-05	595,00 €
Isotype	IgG	conc.	RUO	100-200	1 ml	4108-623R-1	995,00 €

<b>p16</b>		<b>Format</b>	<b>Status</b>	<b>Dilution</b>	<b>Volume</b>	<b>Catalog Number</b>	<b>Price*</b>
<b>Clone</b>	<b>MSVA-016R</b>	conc.	RUO	100-200	0,1 ml	3626-016R-01	295,00 €
Host	Recombinant Rabbit	conc.	RUO	100-200	0,5 ml	3626-016R-05	595,00 €
Isotype	IgG	conc.	RUO	100-200	1 ml	3626-016R-1	995,00 €

<b>p53</b>		<b>Format</b>	<b>Status</b>	<b>Dilution</b>	<b>Volume</b>	<b>Catalog Number</b>	<b>Price*</b>
<b>Clone</b>	<b>MSVA-053R</b>	conc.	RUO	100-200	0,1 ml	5358-053R-01	295,00 €
Host	Recombinant Rabbit	conc.	RUO	100-200	0,5 ml	5358-053R-05	595,00 €
Isotype	IgG	conc.	RUO	100-200	1 ml	5358-053R-1	995,00 €

\*Price not including VAT

<b>p63</b>		<b>Format</b>	<b>Status</b>	<b>Dilution</b>	<b>Volume</b>	<b>Catalog Number</b>	<b>Price*</b>
<b>Clone</b>	<b>MSVA-063R</b>	conc.	RUO	100-200	0,1 ml	4235-063R-01	295,00 €
Host	Recombinant Rabbit	conc.	RUO	100-200	0,5 ml	4235-063R-05	595,00 €
Isotype	IgG	conc.	RUO	100-200	1 ml	4235-063R-1	995,00 €

<b>PAPP-A</b>		<b>Format</b>	<b>Status</b>	<b>Dilution</b>	<b>Volume</b>	<b>Catalog Number</b>	<b>Price*</b>
<b>Clone</b>	<b>MSVA-780M</b>	conc.	RUO	75-150	0,1 ml	3415-780M-01	395,00 €
Host	Mouse	conc.	RUO	75-150	0,5 ml	3415-780M-05	795,00 €
Isotype	IgG	conc.	RUO	75-150	1 ml	3415-780M-1	1.495,00 €

<b>PD-L1</b>		<b>Format</b>	<b>Status</b>	<b>Dilution</b>	<b>Volume</b>	<b>Catalog Number</b>	<b>Price*</b>
<b>Clone</b>	<b>MSVA-711R</b>	conc.	RUO	100-200	0,1 ml	2083-711R-01	295,00 €
Host	Recombinant Rabbit	conc.	RUO	100-200	0,5 ml	2083-711R-05	695,00 €
Isotype	IgG	conc.	RUO	100-200	1 ml	2083-711R-1	1.145,00 €

<b>Periostin</b>		<b>Format</b>	<b>Status</b>	<b>Dilution</b>	<b>Volume</b>	<b>Catalog Number</b>	<b>Price*</b>
<b>Clone</b>	<b>MSVA-649M</b>	conc.	RUO	100-200	0,1 ml	4344-649M-01	295,00 €
Host	Mouse	conc.	RUO	100-200	0,5 ml	4344-649M-05	595,00 €
Isotype	IgG	conc.	RUO	100-200	1 ml	4344-649M-1	995,00 €

<b>PGP9.5</b>		<b>Format</b>	<b>Status</b>	<b>Dilution</b>	<b>Volume</b>	<b>Catalog Number</b>	<b>Price*</b>
<b>Clone</b>	<b>MSVA-905R</b>	conc.	RUO	100-200	0,1 ml	3424-905R-01	295,00 €
Host	Recombinant Rabbit	conc.	RUO	100-200	0,5 ml	3424-905R-05	595,00 €
Isotype	IgG	conc.	RUO	100-200	1 ml	3424-905R-1	995,00 €

<b>PHH3</b>		<b>Format</b>	<b>Status</b>	<b>Dilution</b>	<b>Volume</b>	<b>Catalog Number</b>	<b>Price*</b>
<b>Clone</b>	<b>MSVA-703R</b>	conc.	RUO	100-200	0,1 ml	2693-703R-01	295,00 €
Host	Recombinant Rabbit	conc.	RUO	100-200	0,5 ml	2693-703R-05	595,00 €
Isotype	IgG	conc.	RUO	100-200	1 ml	2693-703R-1	995,00 €

<b>PLAP</b>		<b>Format</b>	<b>Status</b>	<b>Dilution</b>	<b>Volume</b>	<b>Catalog Number</b>	<b>Price*</b>
<b>Clone</b>	<b>MSVA-350R</b>	conc.	RUO	100-200	0,1 ml	2794-350R-01	295,00 €
Host	Recombinant Rabbit	conc.	RUO	100-200	0,5 ml	2794-350R-05	595,00 €
Isotype	IgG	conc.	RUO	100-200	1 ml	2794-350R-1	995,00 €

<b>PMEL17 / gp100</b>		<b>Format</b>	<b>Status</b>	<b>Dilution</b>	<b>Volume</b>	<b>Catalog Number</b>	<b>Price*</b>
<b>Clone</b>	<b>MSVA-617R</b>	conc.	RUO	100-200	0,1 ml	2347-617R-01	295,00 €
Host	Recombinant Rabbit	conc.	RUO	100-200	0,5 ml	2347-617R-05	545,00 €
Isotype	IgG	conc.	RUO	100-200	1 ml	2347-617R-1	895,00 €

<b>Progesterone Receptor</b>		<b>Format</b>	<b>Status</b>	<b>Dilution</b>	<b>Volume</b>	<b>Catalog Number</b>	<b>Price*</b>
<b>Clone</b>	<b>MSVA-570R</b>	conc.	RUO	50-100	0,1 ml	3332-570R-01	295,00 €
Host	Recombinant Rabbit	conc.	RUO	50-100	0,5 ml	3332-570R-05	795,00 €
Isotype	IgG	conc.	RUO	50-100	1 ml	3332-570R-1	1.245,00 €

\*Price not including VAT

PSA		Format	Status	Dilution	Volume	Catalog Number	Price*
<b>Clone</b>	<b>MSVA-603R</b>	conc.	RUO	100-200	0,1 ml	5182-603R-01	295,00 €
Host	Recombinant Rabbit	conc.	RUO	100-200	0,5 ml	5182-603R-05	595,00 €
Isotype	IgG	conc.	RUO	100-200	1 ml	5182-603R-1	995,00 €

PSAP / ACP3 / ACPP		Format	Status	Dilution	Volume	Catalog Number	Price*
<b>Clone</b>	<b>MSVA-452M</b>	conc.	RUO	100-200	0,1 ml	2521-452M-01	295,00 €
Host	Recombinant Mouse	conc.	RUO	100-200	0,5 ml	2521-452M-05	545,00 €
Isotype	IgG	conc.	RUO	100-200	1 ml	2521-452M-1	895,00 €

PTH		Format	Status	Dilution	Volume	Catalog Number	Price*
<b>Clone</b>	<b>MSVA-525R</b>	conc.	RUO	100-200	0,1 ml	2652-525R-01	295,00 €
Host	Recombinant Rabbit	conc.	RUO	100-200	0,5 ml	2652-525R-05	545,00 €
Isotype	IgG	conc.	RUO	100-200	1 ml	2652-525R-1	895,00 €

SATB2		Format	Status	Dilution	Volume	Catalog Number	Price*
<b>Clone</b>	<b>MSVA-702R</b>	conc.	RUO	100-200	0,1 ml	2850-702R-01	295,00 €
Host	Recombinant Rabbit	conc.	RUO	100-200	0,5 ml	2850-702R-05	645,00 €
Isotype	IgG	conc.	RUO	100-200	1 ml	2850-702R-1	1.045,00 €

Synaptophysin		Format	Status	Dilution	Volume	Catalog Number	Price*
<b>Clone</b>	<b>MSVA-462R</b>	conc.	RUO	100-200	0,1 ml	2188-462R-01	295,00 €
Host	Recombinant Rabbit	conc.	RUO	100-200	0,5 ml	2188-462R-05	545,00 €
Isotype	IgG	conc.	RUO	100-200	1 ml	2188-462R-1	895,00 €

S100A12		Format	Status	Dilution	Volume	Catalog Number	Price*
<b>Clone</b>	<b>MSVA-812M</b>	conc.	RUO	100-200	0,1 ml	3780-812M-01	295,00 €
Host	Mouse	conc.	RUO	100-200	0,5 ml	3780-812M-05	595,00 €
Isotype	IgG	conc.	RUO	100-200	1 ml	3780-812M-1	995,00 €

S100P		Format	Status	Dilution	Volume	Catalog Number	Price*
<b>Clone</b>	<b>MSVA-480R</b>	conc.	RUO	100-200	0,1 ml	2558-480R-01	295,00 €
Host	Recombinant Rabbit	conc.	RUO	100-200	0,5 ml	2558-480R-05	595,00 €
Isotype	IgG	conc.	RUO	100-200	1 ml	2558-480R-1	995,00 €

S100		Format	Status	Dilution	Volume	Catalog Number	Price*
<b>Clone</b>	<b>MSVA-490R</b>	conc.	RUO	100-200	0,1 ml	2634-490R-01	165,00 €
Host	Recombinant Rabbit	conc.	RUO	100-200	0,5 ml	2634-490R-05	445,00 €
Isotype	IgG	conc.	RUO	100-200	1 ml	2634-490R-1	695,00 €

Somatostatin		Format	Status	Dilution	Volume	Catalog Number	Price*
<b>Clone</b>	<b>MSVA-638R</b>	conc.	RUO	100-200	0,1 ml	4669-638R-01	295,00 €
Host	Recombinant Rabbit	conc.	RUO	100-200	0,5 ml	4669-638R-05	595,00 €
Isotype	IgG	conc.	RUO	100-200	1 ml	4669-638R-1	995,00 €

\*Price not including VAT

<b>STAR</b>		<b>Format</b>	<b>Status</b>	<b>Dilution</b>	<b>Volume</b>	<b>Catalog Number</b>	<b>Price*</b>
<b>Clone</b>	<b>MSVA-740R</b>	conc.	RUO	75-150	0,1 ml	5396-740R-01	295,00 €
Host	Recombinant Rabbit	conc.	RUO	75-150	0,5 ml	5396-740R-05	545,00 €
Isotype	IgG	conc.	RUO	75-150	1 ml	5396-740R-1	895,00 €

<b>TACSTD2 / Trop2</b>		<b>Format</b>	<b>Status</b>	<b>Dilution</b>	<b>Volume</b>	<b>Catalog Number</b>	<b>Price*</b>
<b>Clone</b>	<b>MSVA-733R</b>	conc.	RUO	100-200	0,1 ml	3648-733R-01	395,00 €
Host	Recombinant Rabbit	conc.	RUO	100-200	0,5 ml	3648-733R-05	895,00 €
Isotype	IgG	conc.	RUO	100-200	1 ml	3648-733R-1	1.495,00 €

<b>TdT</b>		<b>Format</b>	<b>Status</b>	<b>Dilution</b>	<b>Volume</b>	<b>Catalog Number</b>	<b>Price*</b>
<b>Clone</b>	<b>MSVA-453R</b>	conc.	RUO	75-150	0,1 ml	2904-453R-01	295,00 €
Host	Recombinant Rabbit	conc.	RUO	75-150	0,5 ml	2904-453R-05	545,00 €
Isotype	IgG	conc.	RUO	75-150	1 ml	2904-453R-1	895,00 €

<b>Thyroglobulin</b>		<b>Format</b>	<b>Status</b>	<b>Dilution</b>	<b>Volume</b>	<b>Catalog Number</b>	<b>Price*</b>
<b>Clone</b>	<b>MSVA-189R</b>	conc.	RUO	100-200	0,1 ml	2119-189R-01	295,00 €
Host	Recombinant Rabbit	conc.	RUO	100-200	0,5 ml	2119-189R-05	545,00 €
Isotype	IgG	conc.	RUO	100-200	1 ml	2119-189R-1	895,00 €

<b>TIM3</b>		<b>Format</b>	<b>Status</b>	<b>Dilution</b>	<b>Volume</b>	<b>Catalog Number</b>	<b>Price*</b>
<b>Clone</b>	<b>MSVA-366R</b>	conc.	RUO	100-200	0,1 ml	3484-366R-01	445,00 €
Host	Recombinant Rabbit	conc.	RUO	100-200	0,5 ml	3484-366R-05	1.675,00 €
Isotype	IgG	conc.	RUO	100-200	1 ml	3484-366R-1	2.995,00 €

<b>TOP2A / TOPO2A</b>		<b>Format</b>	<b>Status</b>	<b>Dilution</b>	<b>Volume</b>	<b>Catalog Number</b>	<b>Price*</b>
<b>Clone</b>	<b>MSVA-802R</b>	conc.	RUO	100-200	0,1 ml	3172-802R-01	295,00 €
Host	Recombinant Rabbit	conc.	RUO	100-200	0,5 ml	3172-802R-05	645,00 €
Isotype	IgG	conc.	RUO	100-200	1 ml	3172-802R-1	1.095,00 €

<b>TRIM29</b>		<b>Format</b>	<b>Status</b>	<b>Dilution</b>	<b>Volume</b>	<b>Catalog Number</b>	<b>Price*</b>
<b>Clone</b>	<b>MSVA-629M</b>	conc.	RUO	100-200	0,1 ml	4452-629M-01	295,00 €
Host	Mouse	conc.	RUO	100-200	0,5 ml	4452-629M-05	545,00 €
Isotype	IgG	conc.	RUO	100-200	1 ml	4452-629M-1	895,00 €

<b>Uroplakin 1A</b>		<b>Format</b>	<b>Status</b>	<b>Dilution</b>	<b>Volume</b>	<b>Catalog Number</b>	<b>Price*</b>
<b>Clone</b>	<b>MSVA-735M</b>	conc.	RUO	100-200	0,1 ml	4386-735M-01	295,00 €
Host	Mouse	conc.	RUO	100-200	0,5 ml	4386-735M-05	545,00 €
Isotype	IgG	conc.	RUO	100-200	1 ml	4386-735M-1	895,00 €

<b>Uroplakin 1B</b>		<b>Format</b>	<b>Status</b>	<b>Dilution</b>	<b>Volume</b>	<b>Catalog Number</b>	<b>Price*</b>
<b>Clone</b>	<b>MSVA-734M</b>	conc.	RUO	100-200	0,1 ml	3797-734M-01	295,00 €
Host	Mouse	conc.	RUO	100-200	0,5 ml	3797-734M-05	545,00 €
Isotype	IgG	conc.	RUO	100-200	1 ml	3797-734M-1	895,00 €

\*Price not including VAT



<b>Uroplakin 3B</b>		<b>Format</b>	<b>Status</b>	<b>Dilution</b>	<b>Volume</b>	<b>Catalog Number</b>	<b>Price*</b>
<b>Clone</b>	<b>MSVA-736M</b>	conc.	RUO	100-200	0,1 ml	4879-736M-01	295,00 €
Host	Mouse	conc.	RUO	100-200	0,5 ml	4879-736M-05	595,00 €
Isotype	IgG	conc.	RUO	100-200	1 ml	4879-736M-1	995,00 €

<b>Villin</b>		<b>Format</b>	<b>Status</b>	<b>Dilution</b>	<b>Volume</b>	<b>Catalog Number</b>	<b>Price*</b>
<b>Clone</b>	<b>MSVA-459R</b>	conc.	RUO	100-200	0,1 ml	2576-459R-01	295,00 €
Host	Recombinant Rabbit	conc.	RUO	100-200	0,5 ml	2576-459R-05	545,00 €
Isotype	IgG	conc.	RUO	100-200	1 ml	2576-459R-1	895,00 €

<b>Vimentin</b>		<b>Format</b>	<b>Status</b>	<b>Dilution</b>	<b>Volume</b>	<b>Catalog Number</b>	<b>Price*</b>
<b>Clone</b>	<b>MSVA-458R</b>	conc.	RUO	100-200	0,1 ml	2914-458R-01	295,00 €
Host	Recombinant Rabbit	conc.	RUO	100-200	0,5 ml	2914-458R-05	545,00 €
Isotype	IgG	conc.	RUO	100-200	1 ml	2914-458R-1	895,00 €

<b>vWF (von Willebrand Factor)</b>		<b>Format</b>	<b>Status</b>	<b>Dilution</b>	<b>Volume</b>	<b>Catalog Number</b>	<b>Price*</b>
<b>Clone</b>	<b>MSVA-521R</b>	conc.	RUO	50-100	0,1 ml	2760-521R-01	295,00 €
Host	Recombinant Rabbit	conc.	RUO	50-100	0,5 ml	2760-521R-05	545,00 €
Isotype	IgG	conc.	RUO	50-100	1 ml	2760-521R-1	895,00 €

<b>XRCC5/Ku-p80</b>		<b>Format</b>	<b>Status</b>	<b>Dilution</b>	<b>Volume</b>	<b>Catalog Number</b>	<b>Price*</b>
<b>Clone</b>	<b>MSVA-880M</b>	conc.	RUO	100-200	0,1 ml	5160-880M-01	295,00€
Host	Mouse	conc.	RUO	100-200	0,5 ml	5160-880M-05	595,00€
Isotype	IgG	conc.	RUO	100-200	1 ml	5160-880M-1	995,00€

<b>ZAP-70</b>		<b>Format</b>	<b>Status</b>	<b>Dilution</b>	<b>Volume</b>	<b>Catalog Number</b>	<b>Price*</b>
<b>Clone</b>	<b>MSVA-870R</b>	conc.	RUO	100-200	0,1 ml	3513-870R-01	295,00€
Host	Recombinant Rabbit	conc.	RUO	100-200	0,5 ml	3513-870R-05	595,00€
Isotype	IgG	conc.	RUO	100-200	1 ml	3513-870R-1	995,00€

\*Price not including VAT



**MS Validated Antibodies GmbH**

Bergstedter Chaussee 62a

22395 Hamburg

Tel: +49 (0) 40 89 72 55 81

E-Mail: [info@ms-validatedantibodies.com](mailto:info@ms-validatedantibodies.com)

Website: [ms-validatedantibodies.com](https://ms-validatedantibodies.com)



**SCAN ME**

